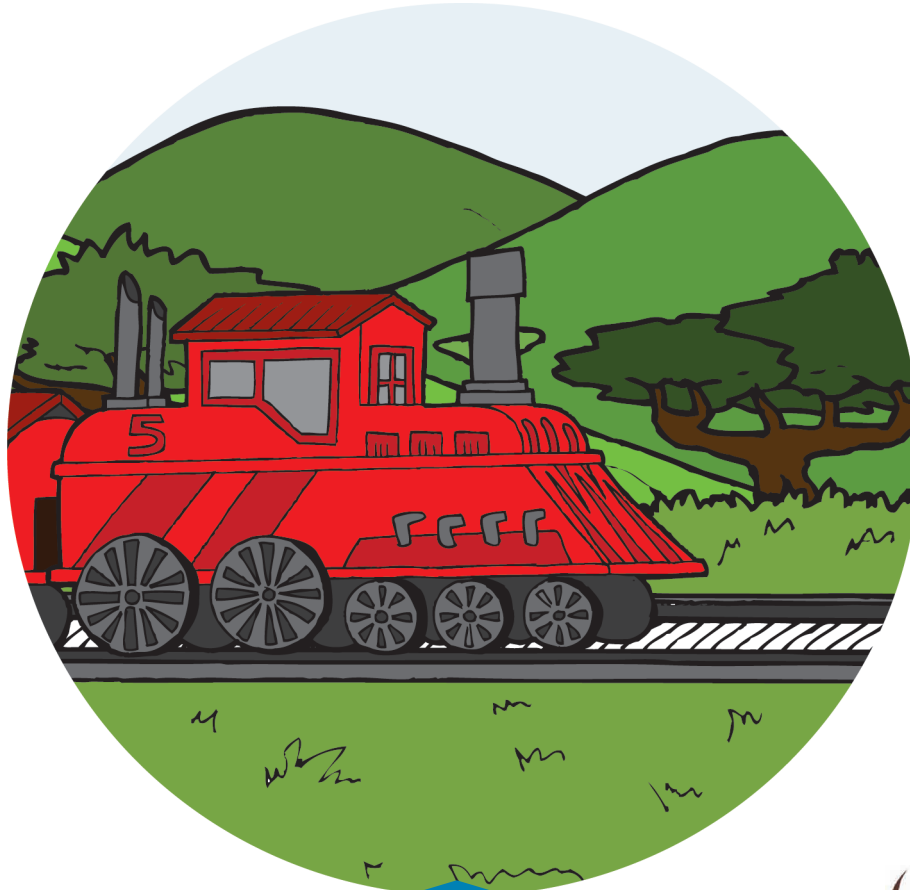




Wewe le Setimela

Puku ye e ngwadilwe la mathomo ka siSwati ke Busile Cynthia Ndlovu
Moswantšhi ke Shayne Capazorio Mohlami ke Leah Prinsloo
E fetoletšwe go tšwa lelemeng la siSwati ke Kwena Richard Malebana



WORLD BANK GROUP



Room to Read®



abantwana

publishing

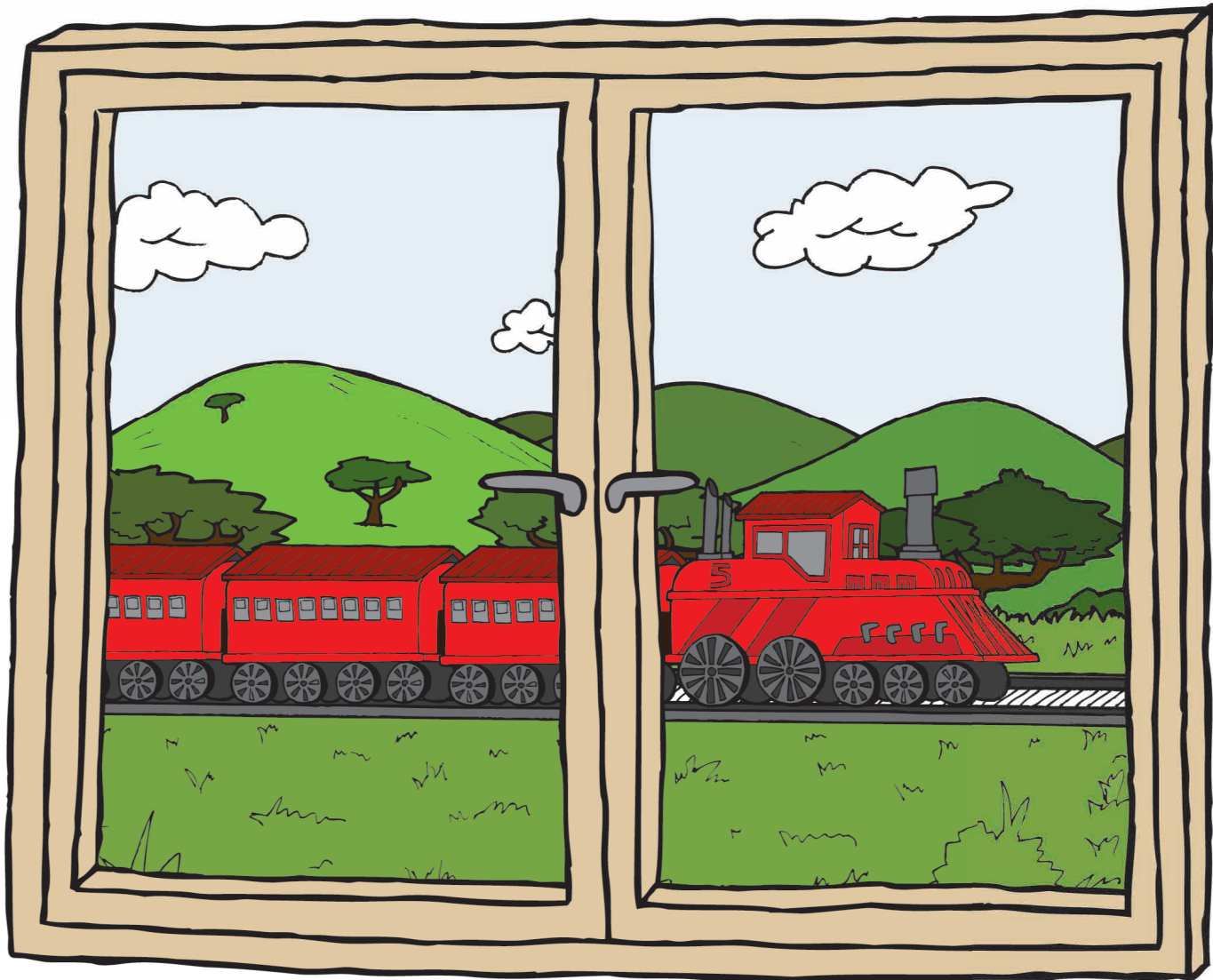




2

Wewe o rata modumo wa setimela.





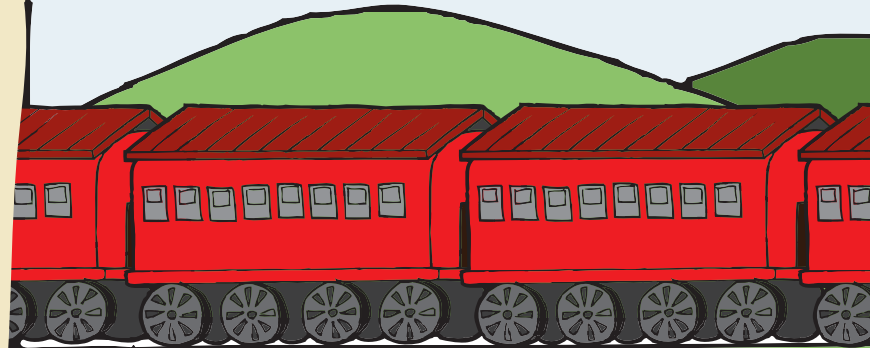
Ka mehla ge se feta gagabo, o kwa
leina la gagwe.

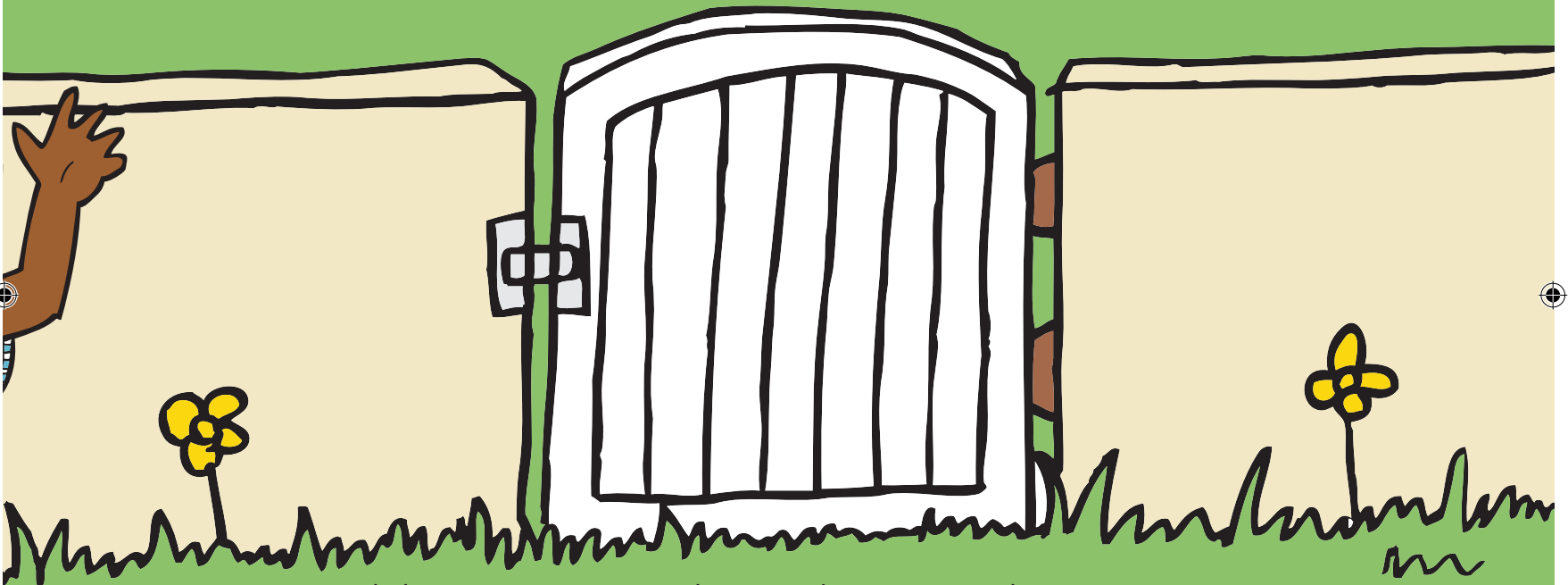
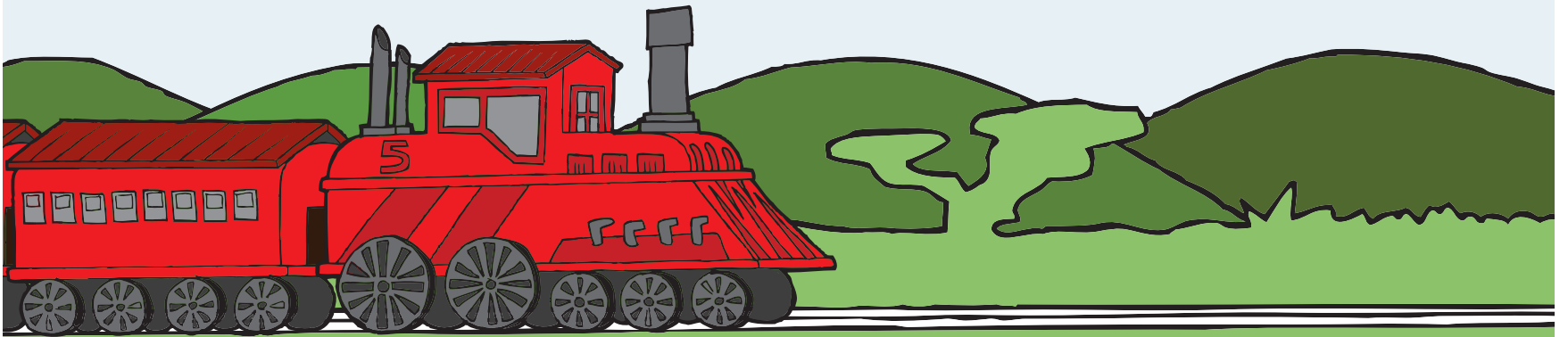
pe! Wewe! Khushu khushu khushu.





4





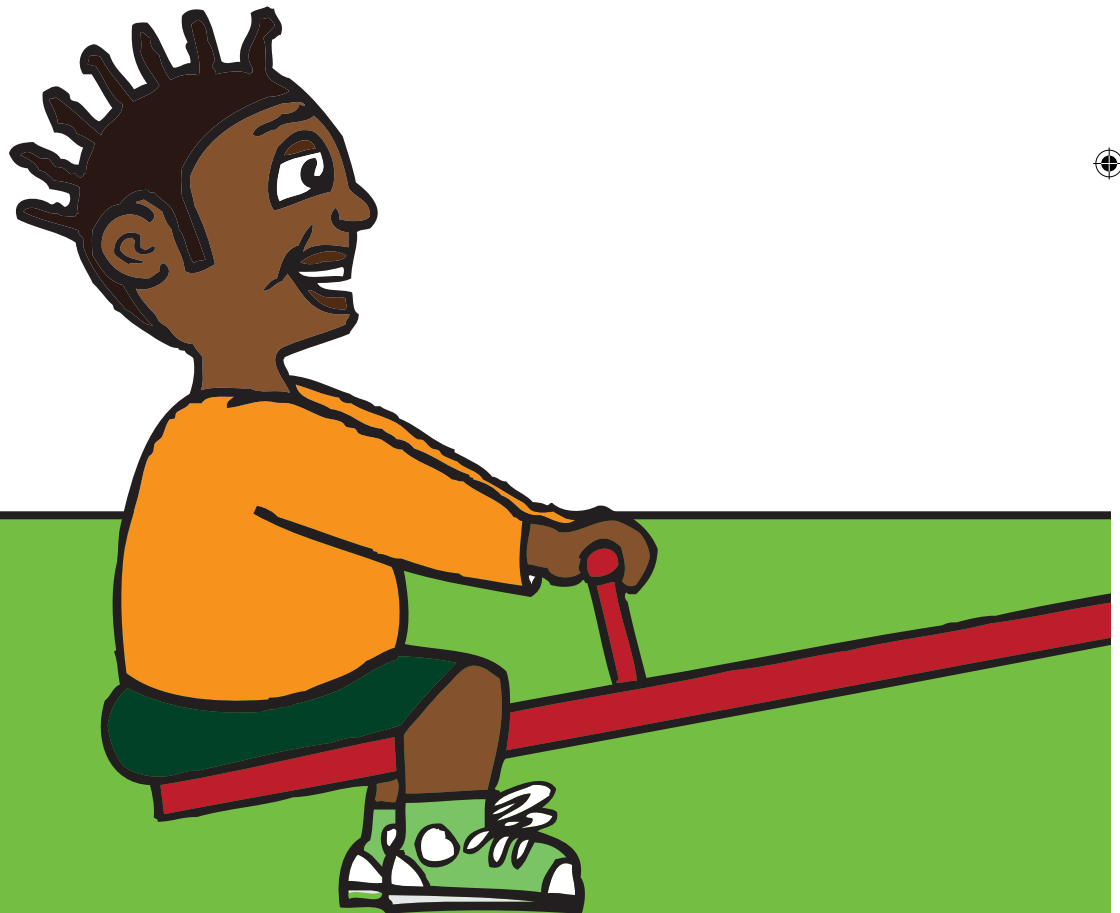
Ka mehla ge setimela se batamela, Wewe o bitša kgaetšedi ya gagwe, Wezi.

“Etna, Wezi! Etna o tle o kwe setimela ge se bitša leina la ka.”





Ka letšatši le lengwe, Wewe a le
lepatlelong la dipapadi sekolong.





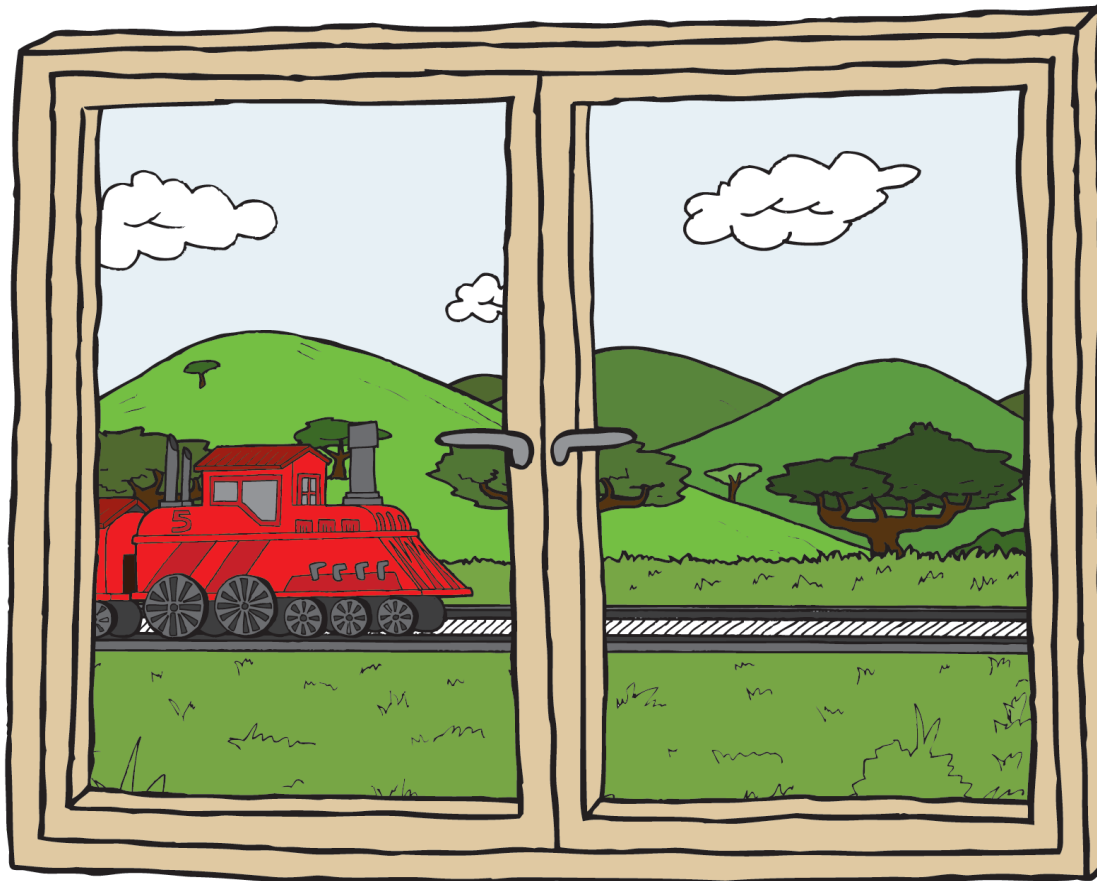
“Setimela se bitša leina la ka ka
mehla ge se feta gagešo,”
o botša bagwera ba gagwe.





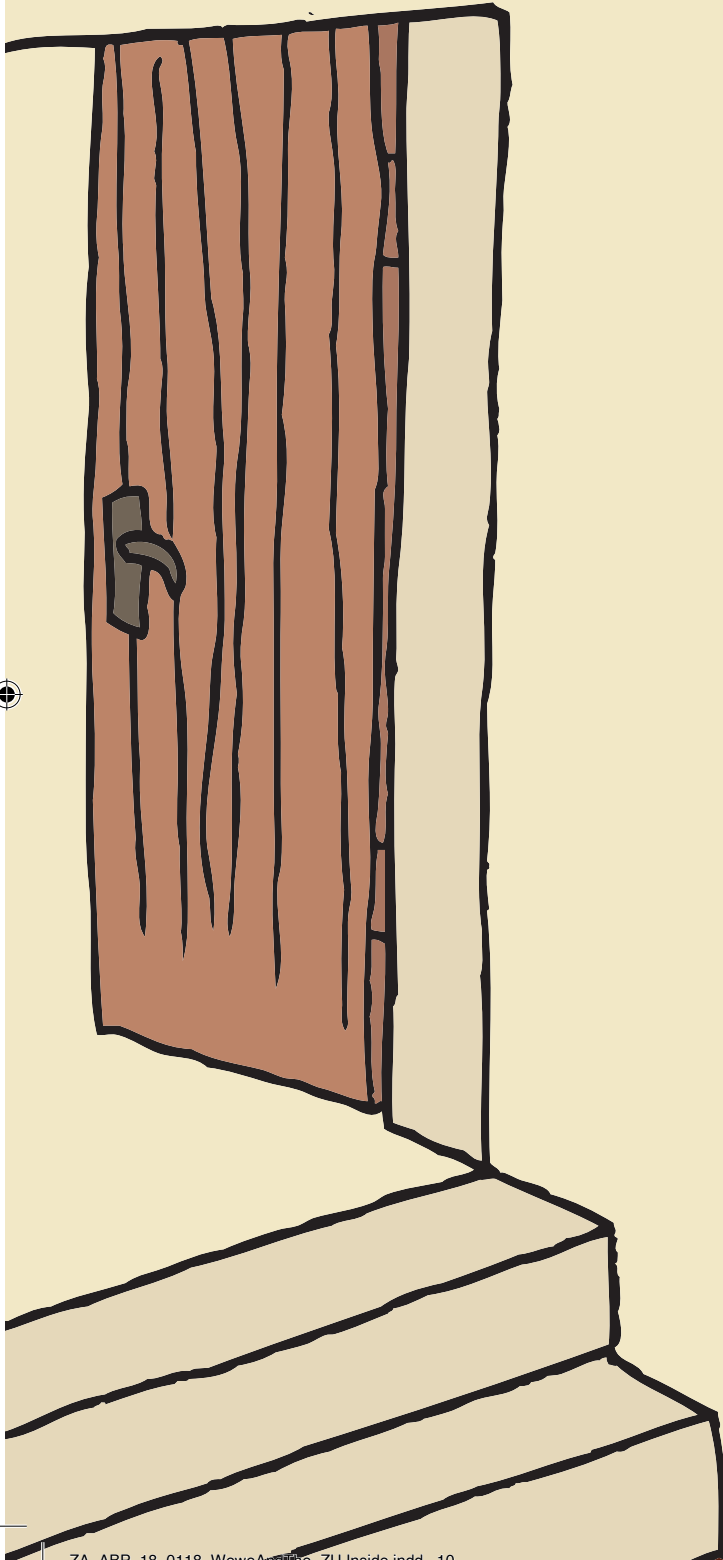
Ka morago ga sekolo, Wewe le
Wezi ba dira mošomo wa gae.

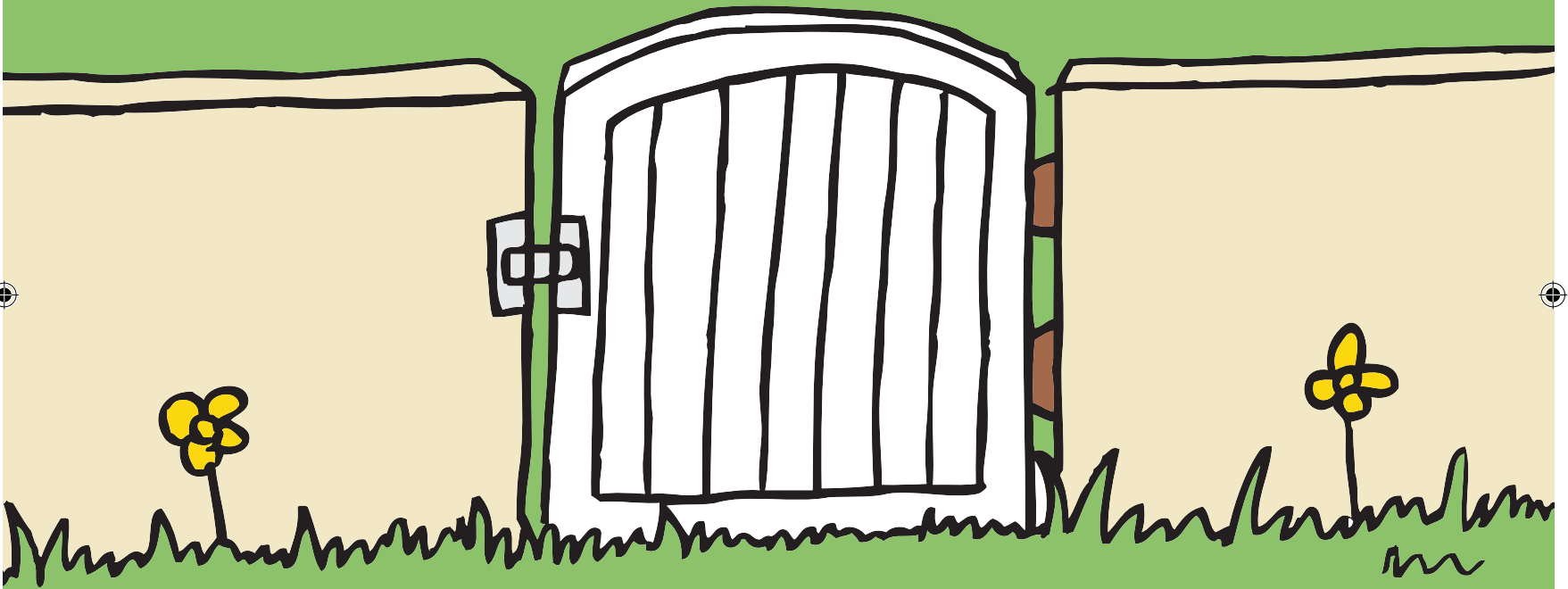
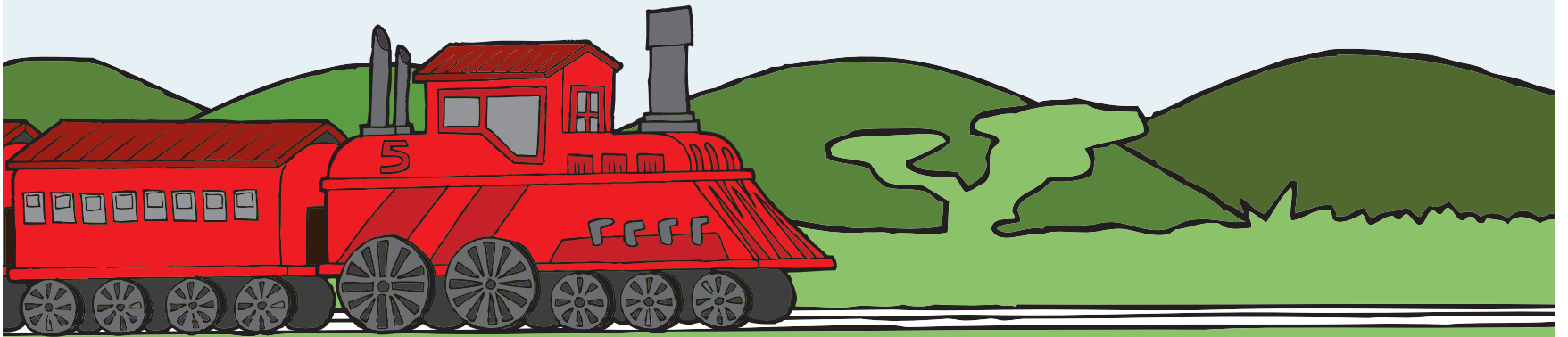




Wewe a kwa setimela se batamela.



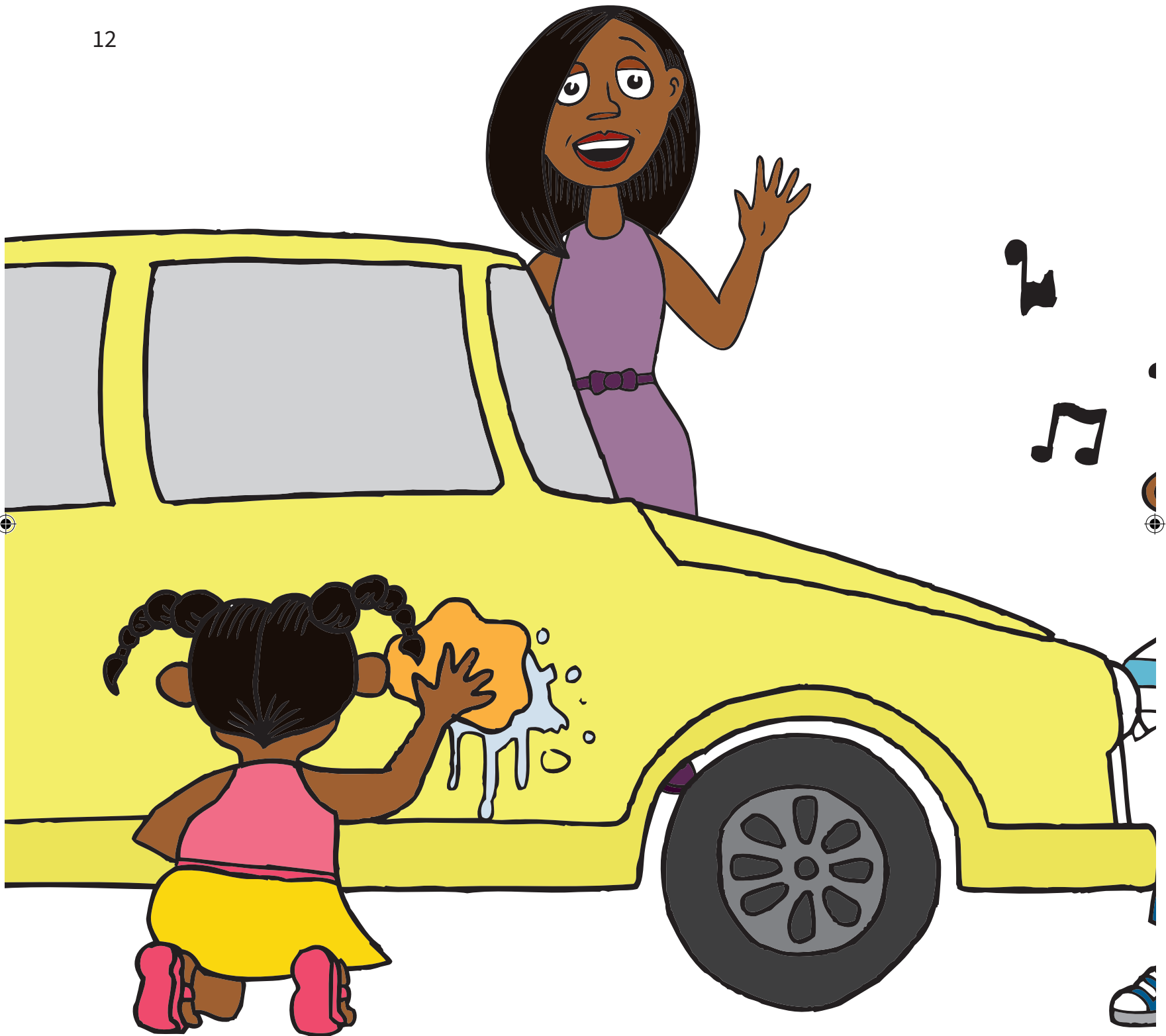




A kitimela ka ntle gomme a bogela
setimela ge se feta ka lebelo.

pe! Wewe! Khushu khushu khushu.







Letšatši leo le latelago ka morago
ga sekolo, Wewe le Wezi ba thuša
mmagobona go hlatswa sefatanaga.
Ge a dutše a hlatswa, Wewe o thoma
go opela.

Pe! Wewe! Khushu khushu khushu.



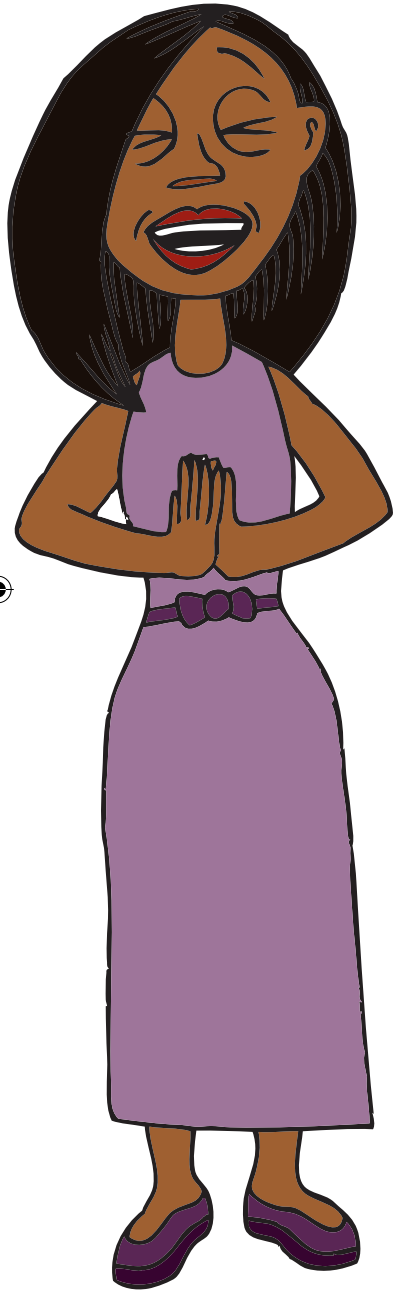


Wezi o ile a tsena košeng.
Mmagobona le yena o ile
a tsena košeng.





Pe! Wewe! Khushu khushu khushu.





Wewe o ya phakeng go bapala le
bagwera ba gagwe.





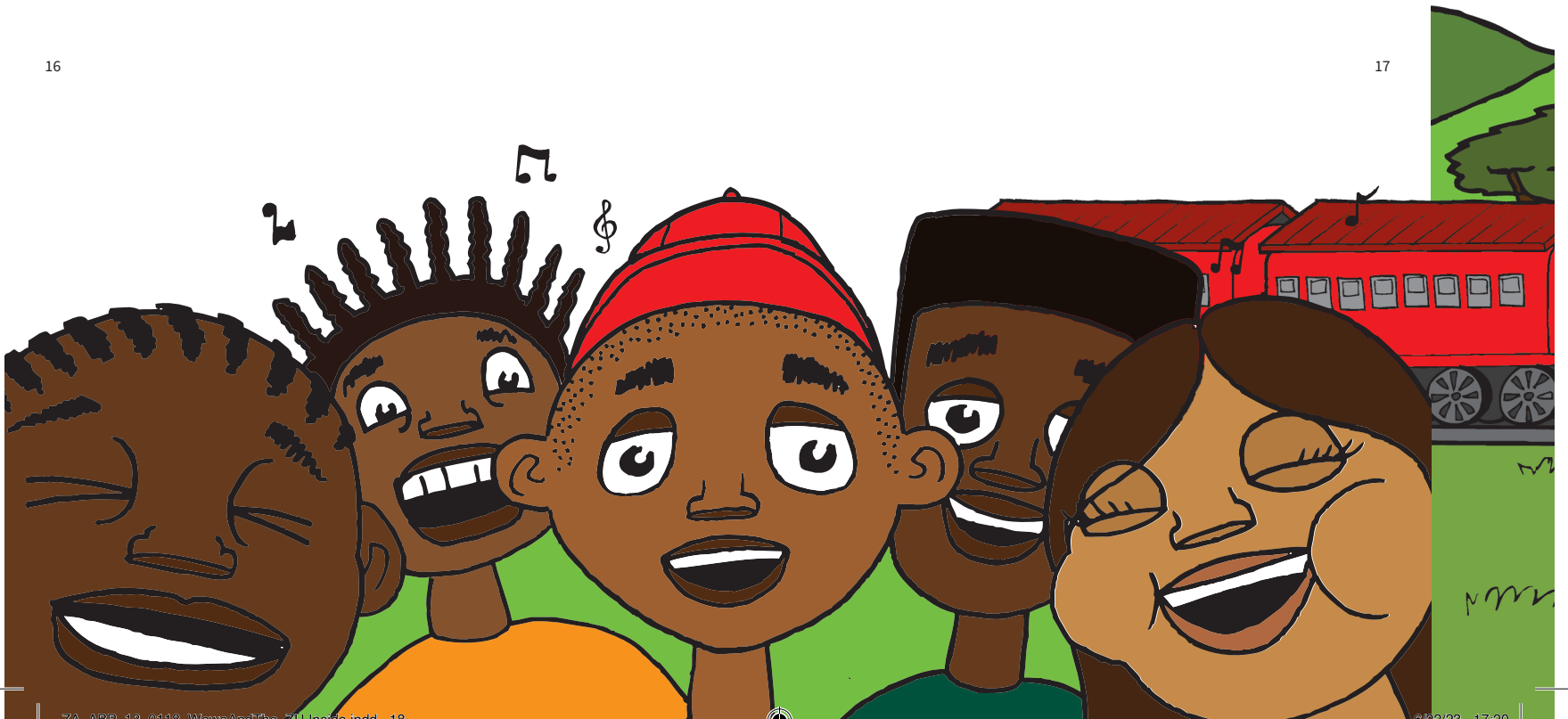
Ba swarana ka matsogo go dira setimela ba
thoma go opela.

pe! Wewe! Khushu khushu khushu.



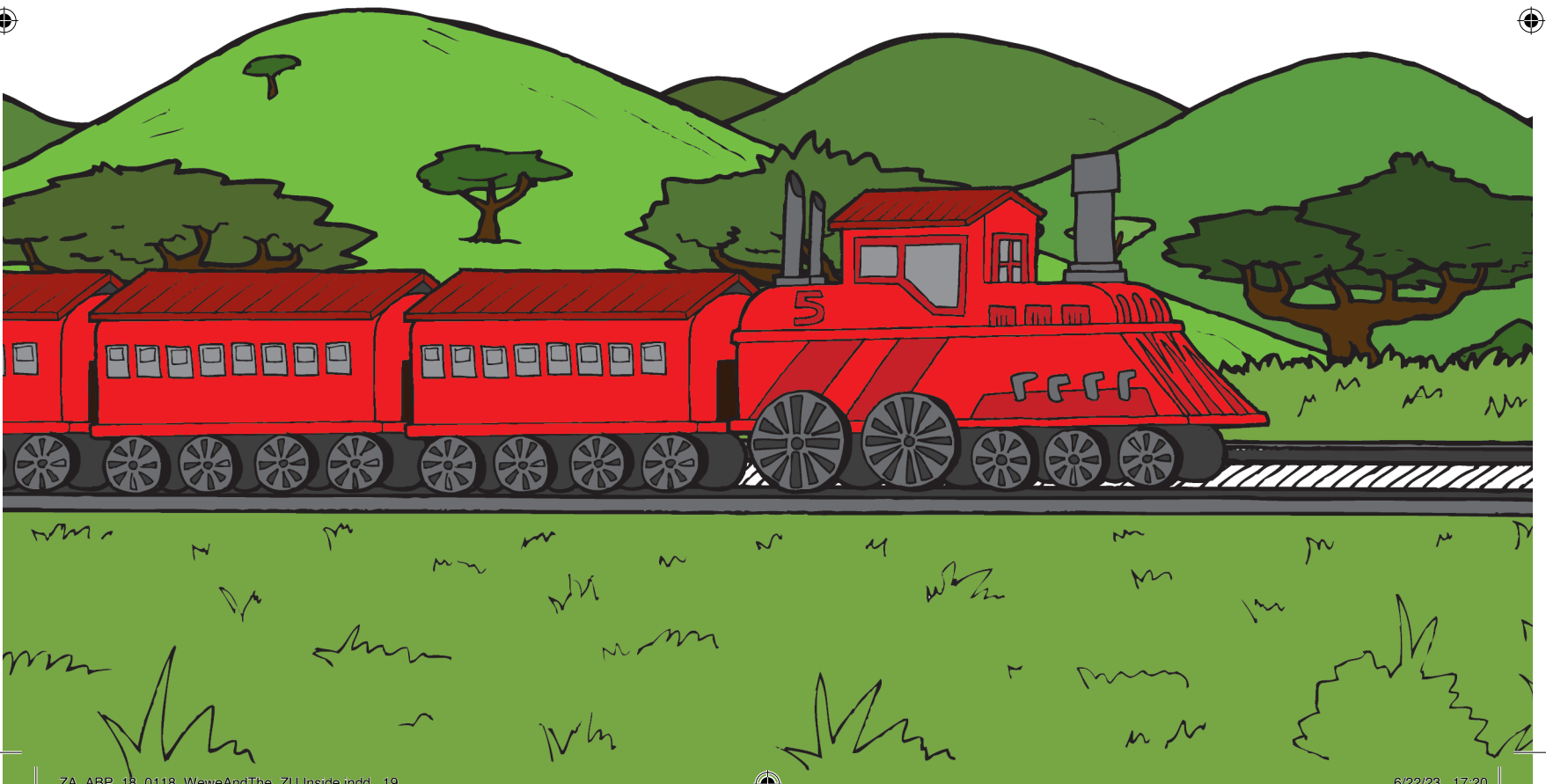


Ge ba sa bapala,
setimela sa rotoga.





Pe! Wewe! Khushu khushu khushu.
Pe! Wewe! Khushu khushu khushu.



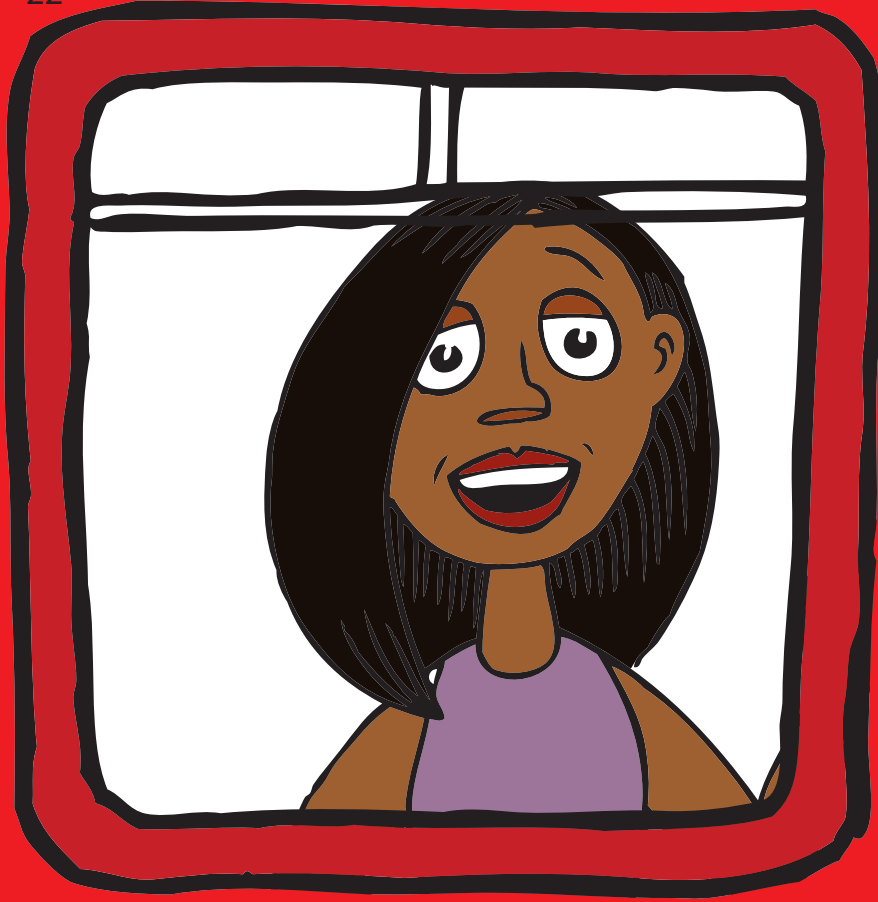




Ge a boela gae,
mmago Wewe o re,

“Ke bone ka fao o ratago setime-
la ka gona. Ka lebaka leo, ke re-
kile dithekethe tša gore re namele
setimela gosasa go ya toropong!”





Letšatši leo le latelago ke Mokibelo. E sa le mesong,
Wewe, Wezi le Mma ba ya setišing.

Setimela se tšwa ka setišing.



23

Pe! Wewe! Khushu khushu khushu.
Pe! Wewe! Khushu khushu khushu.



Room to Read South Africa

1209 Francis Baard Street, The Gables, 1 Floor, Hatfield, Pretoria 0028, South Africa
www.roomtoread.org

Ka 2018, projeke ya REACH e thušitše Room to Read le baphatlalatši ba selegae ba Aforika Borwa go tšweletša dipuku tše 20 tše diswa ka maleme a Aforika Borwa. O swere e nngwe ya dipuku tšeo ka seatleng sa gago! Puku e nngwe le e nngwe mathomong e be e ngwadilwe ka Sepedi, siSwati, Xitsonga, Tshivenda goba isiZulu. Dipuku tšeo tše 20 di gona ka maleme ao ka moka gammogo le ka Seisemane. Go kwa kudu ka se, etela onedayonebookorg.

Wewe le Setimela

Wewe and the Train

Mofetoledi ke Richard Kwena Malebana

Room to Read GSD ID: ZA-ABP-18-0116

ISBN: 978-1-928441-14-4

Kgatišo ya mathomo ya puku ye e gatišitšwe ke Abantwana Publishing.

Puku ye e ngwadilwe la mathomo ka siSwati ke Busile Cynthia Ndlovu.

Moswantšhi ke Shayne Capazorio

Mohlami ke Leah Prinsloo

E rulagantšwe ke Alison Ziki

ka thušo ya batšea karolo ba One Day One Book go la Johannesburg ka la 9 June 2018.

Ge o na le kgahlego ya go reka dikhophi tše dingwe tša puku ye, hle ikopanye le mophatlalatši.

Abantwana Publishing

145 Corlett Drive, Bramley, Sandton, 2090

Salome Marima | 011 440 3141 | sales@abantwanapublishing.co.za

Projeke ye e thekgilwe ka mašelang a trust ya Results in Education for All Children (REACH) go Panka ya Lefase (World Bank) and the Global Book Alliance gomme e thekgwa ke Kgoro ya Thuto ya Motheo.



Ditokelo tša bong tša puku ye di swerwe ke babopi ba karolo e nngwe le e nngwe ya puku. Ba kgethile go fa laesense karolo ya bona ka tlase ga laesense ya Creative Commons Attribution 4.0, seo se rago gore puku ka moka e rwele laesense yeo ya go swana. Ka gona, mang le mang a ka downloda, a fetolela, a gatiša le go phatlalatša puku ye. Ge o ka diriša eng kapa eng go tšwa pukung ye, o gapeletšega go bolela maina a babopi ba yona.

