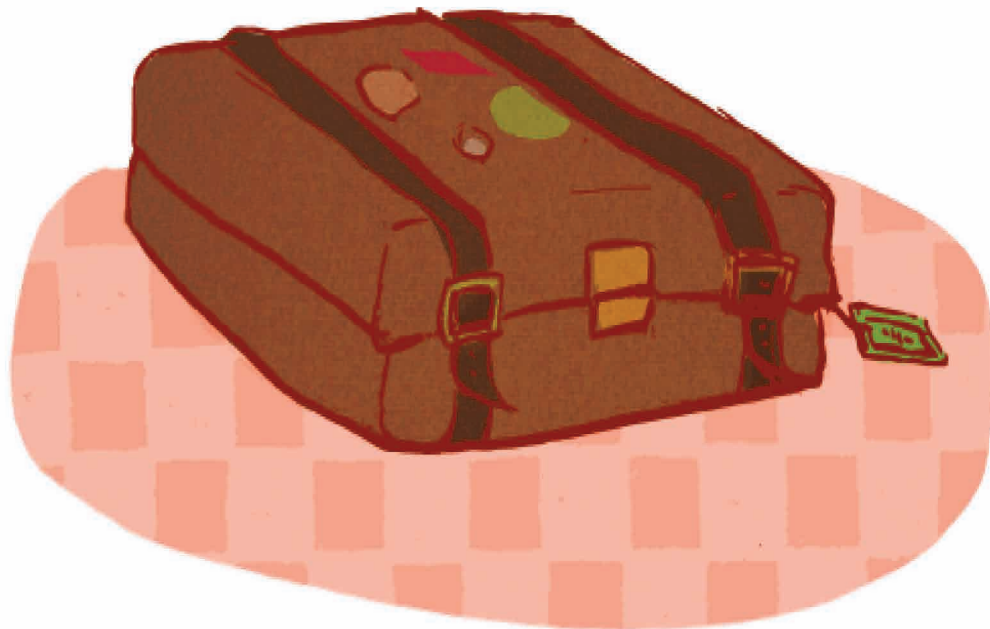




# Liputumende

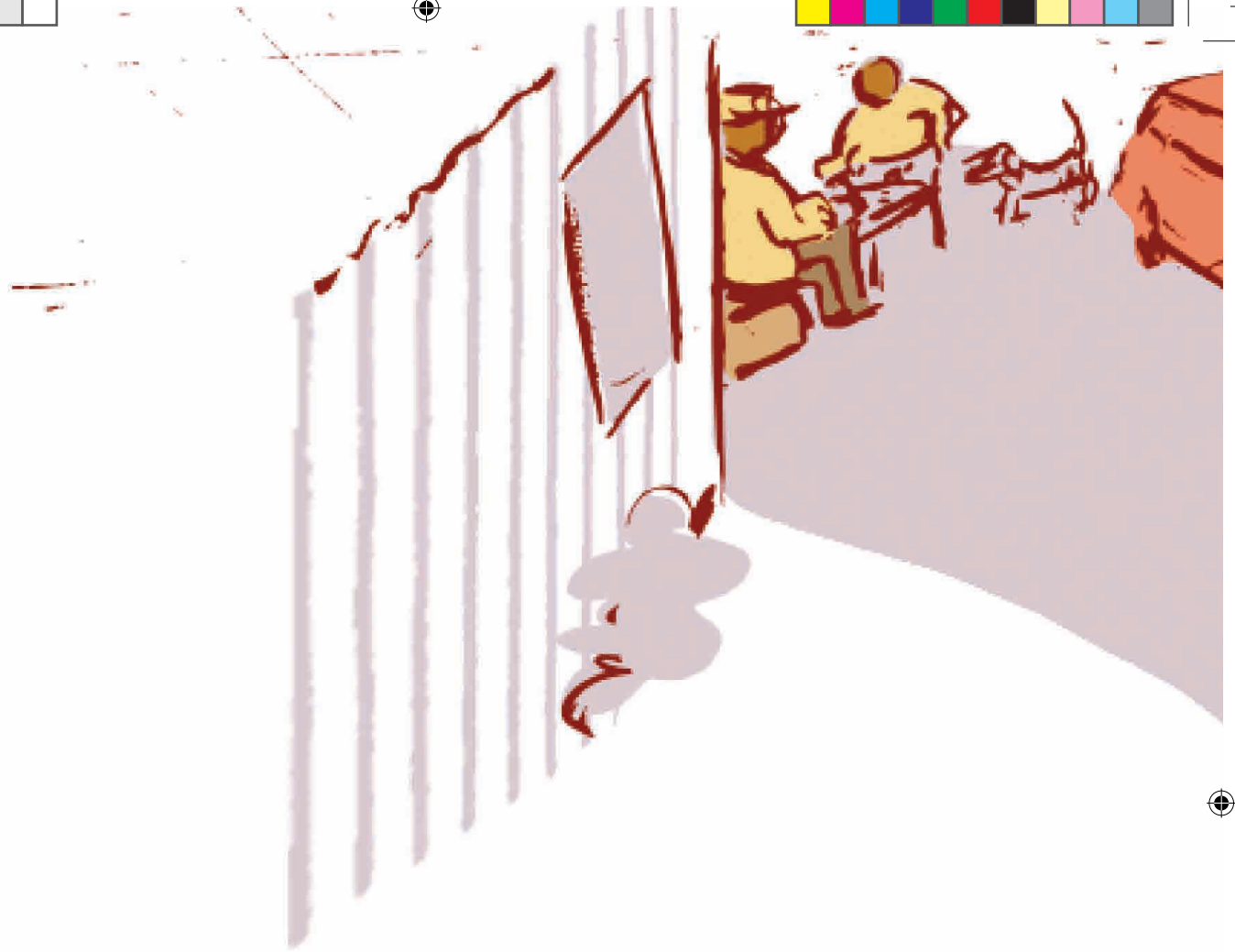
Lencwadzi yasungulwa yabhalwa kwekucala ngesiZulu nguMbongeni Nzimande

Umdvwebi nguElizabeth Pulles Umcondzisi nguLeona Ingram



Yahunyushwa isuselwa elulwimini lwayo lwesiZulu nguTimothy Mfana Mongwe





Selisondzele lilanga lemncintiswano  
wemdanso, bonkhe bantfu  
bakhuluma ngetimphahla  
lebayotiyogcoka.





Lwazi ukhatsatekile kutsi utawugcokani? Gogo ukhatsatekile naye, ufuna umtukulu wakhe aphumelele.

“Ngikhumbula Mkhulu wami,” Lwazi uyacabanga.  
“Mkhulu bekatawuba nalo lisu.”







Lwazi utjela Gogo ngelisu lekutsengisa ematsanga,  
kute kutsengwe timphahla.

Lwazi wehla wenyuka atsengisa ematsanga.  
Kute lowatsengako ngobe aluhlata.

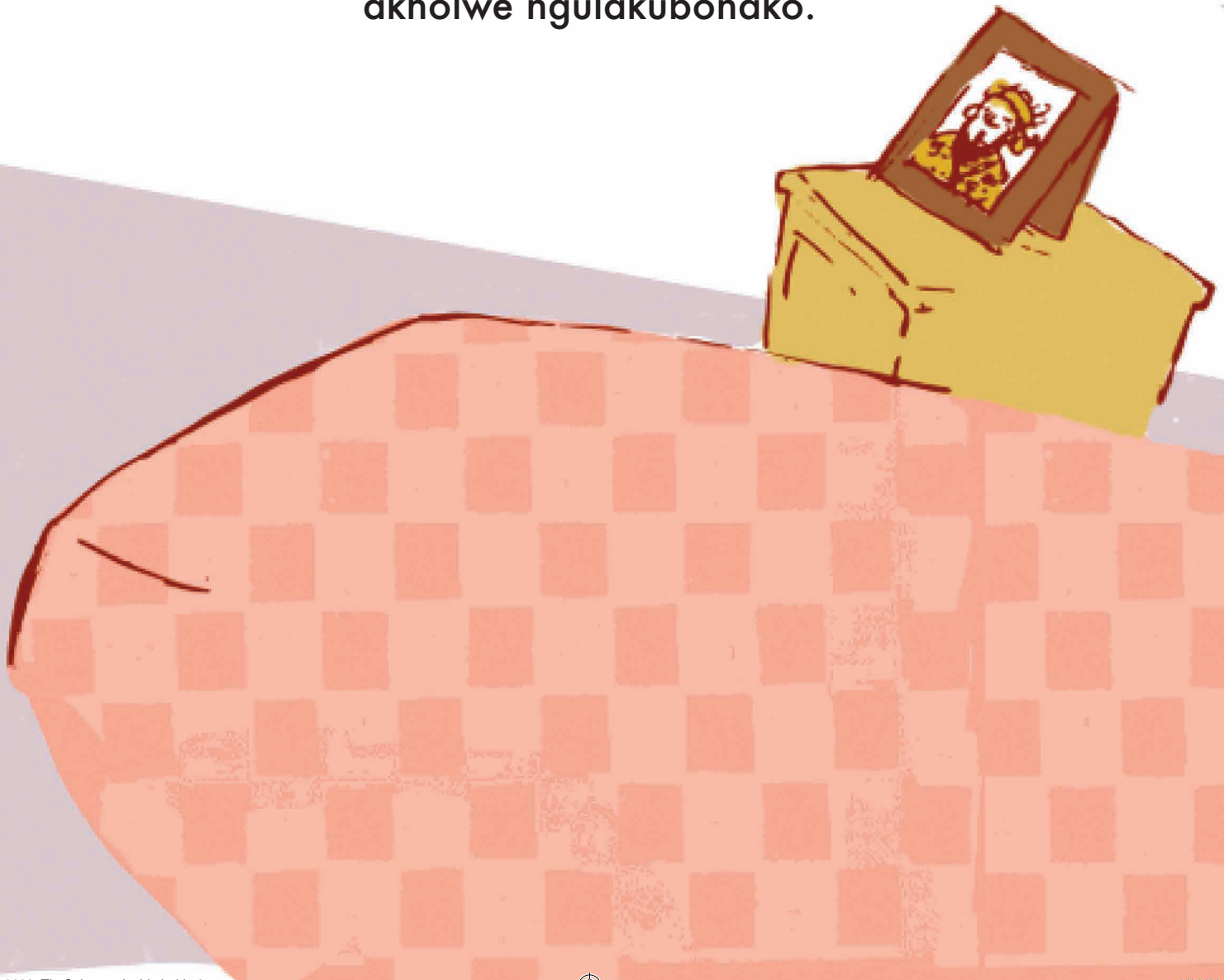






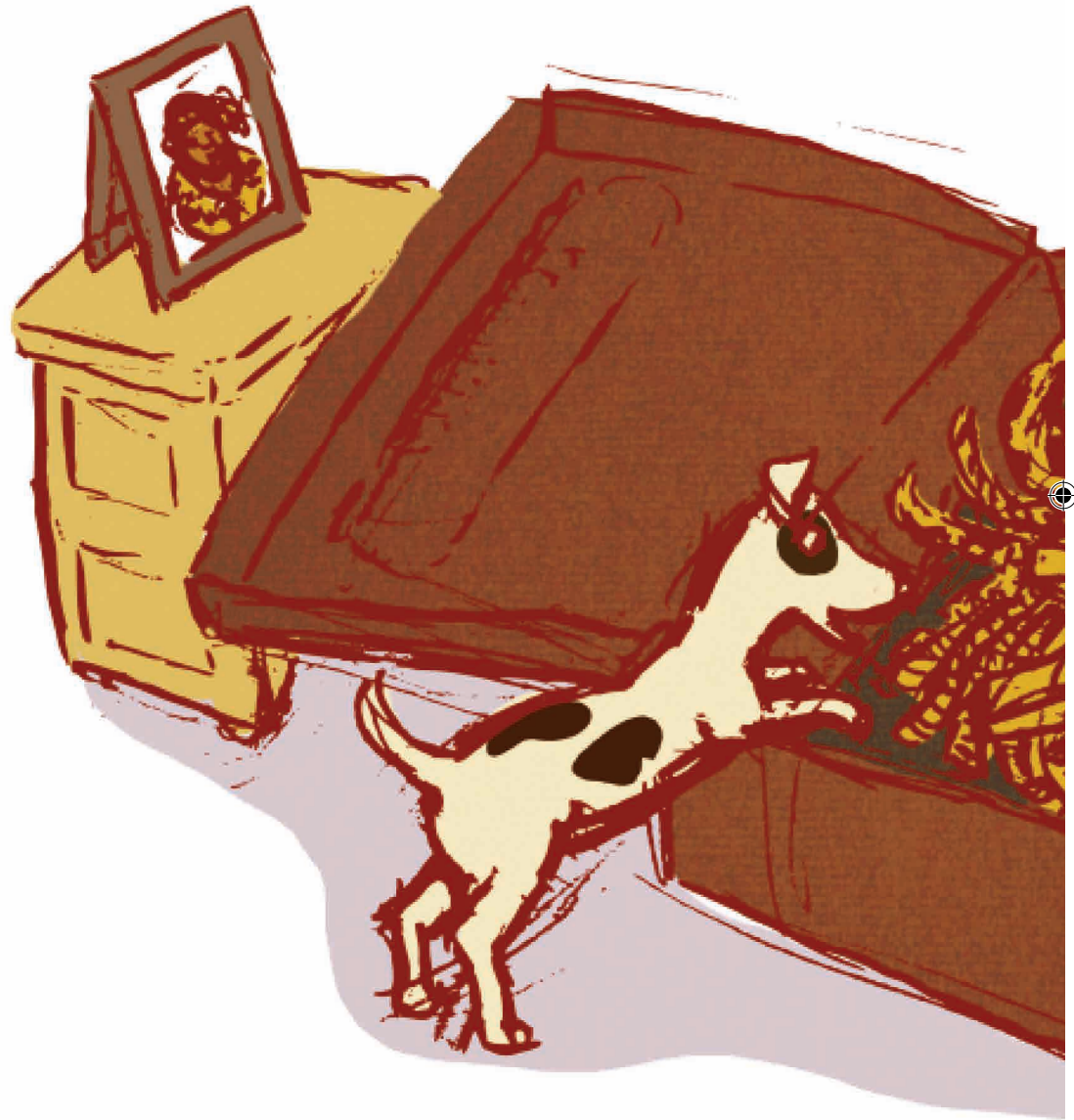
Lwazi uhleti uyacabanga kutsi yini lenye langayenta.  
Ubona liputumende lelidzala lelabekwa  
nguGogo etulu ewadirobhu.

Ugibela esitulwini uyaletfula. Utsintsita tintfuli.  
Kutse nalivula, akamange  
akholwe ngulakubonako.





Eputumendeni kunetimpahla letinhle taMkhulu!





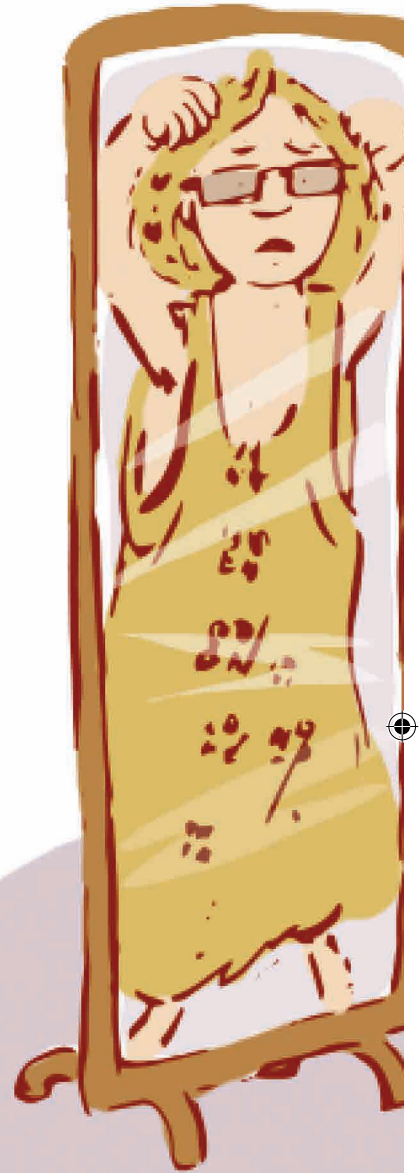
Emehlo aLwazi agcwala injabulo  
nacabanga ngemncintiswano.





Lwazi ulinganisa livesti,  
liba likhulu kuye!  
Libhande lasenhloko nalo likhulu.

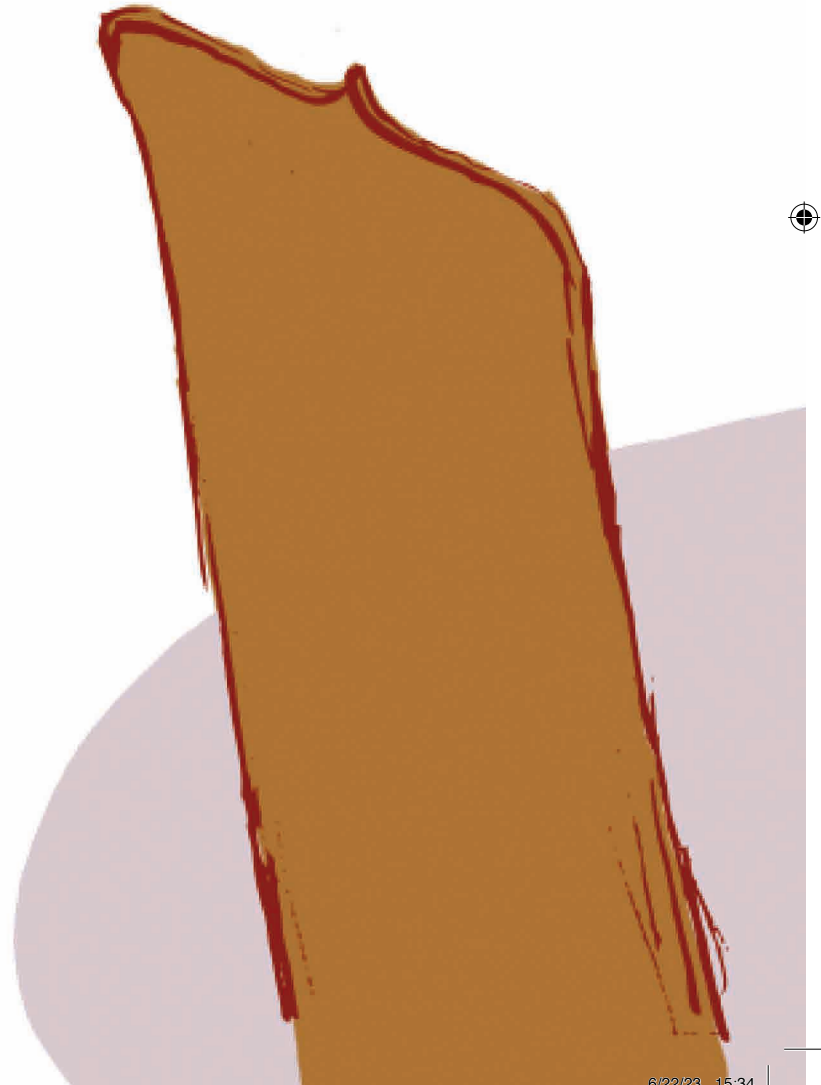
Uyakhatsateka. Konkhe  
akumlingani kukhulu kuye.







“Ukhalelani Lwazi?” kubuta Gogo nambona,  
“Letimphahla tihle!”





“Hhayi Gogo, akusinjalo,”  
kusho Lwazi akhala.  
“Batangihleka. Ngibuke nje!”

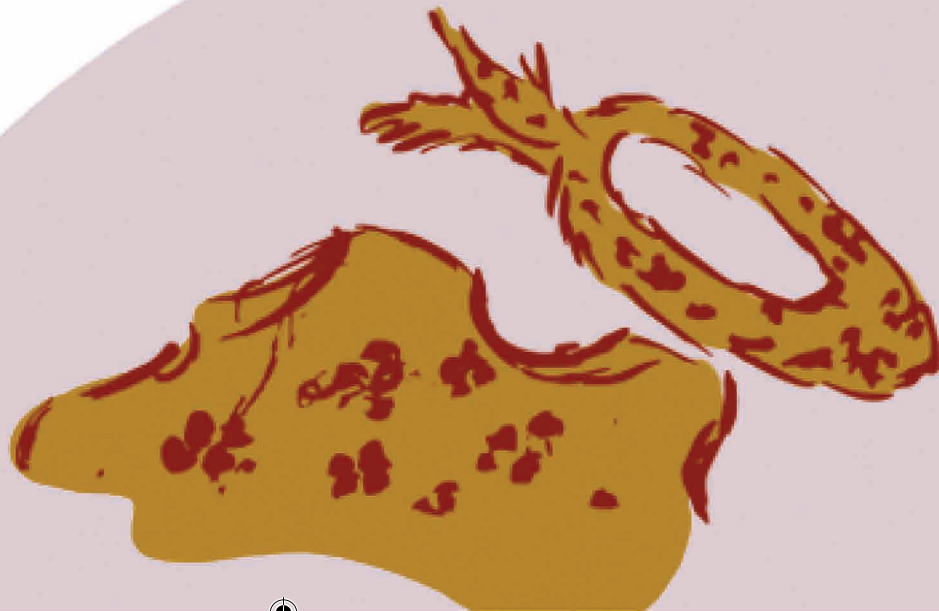
“Ngiyati lekumele  
ngikwente,”  
kuphendvula Gogo.





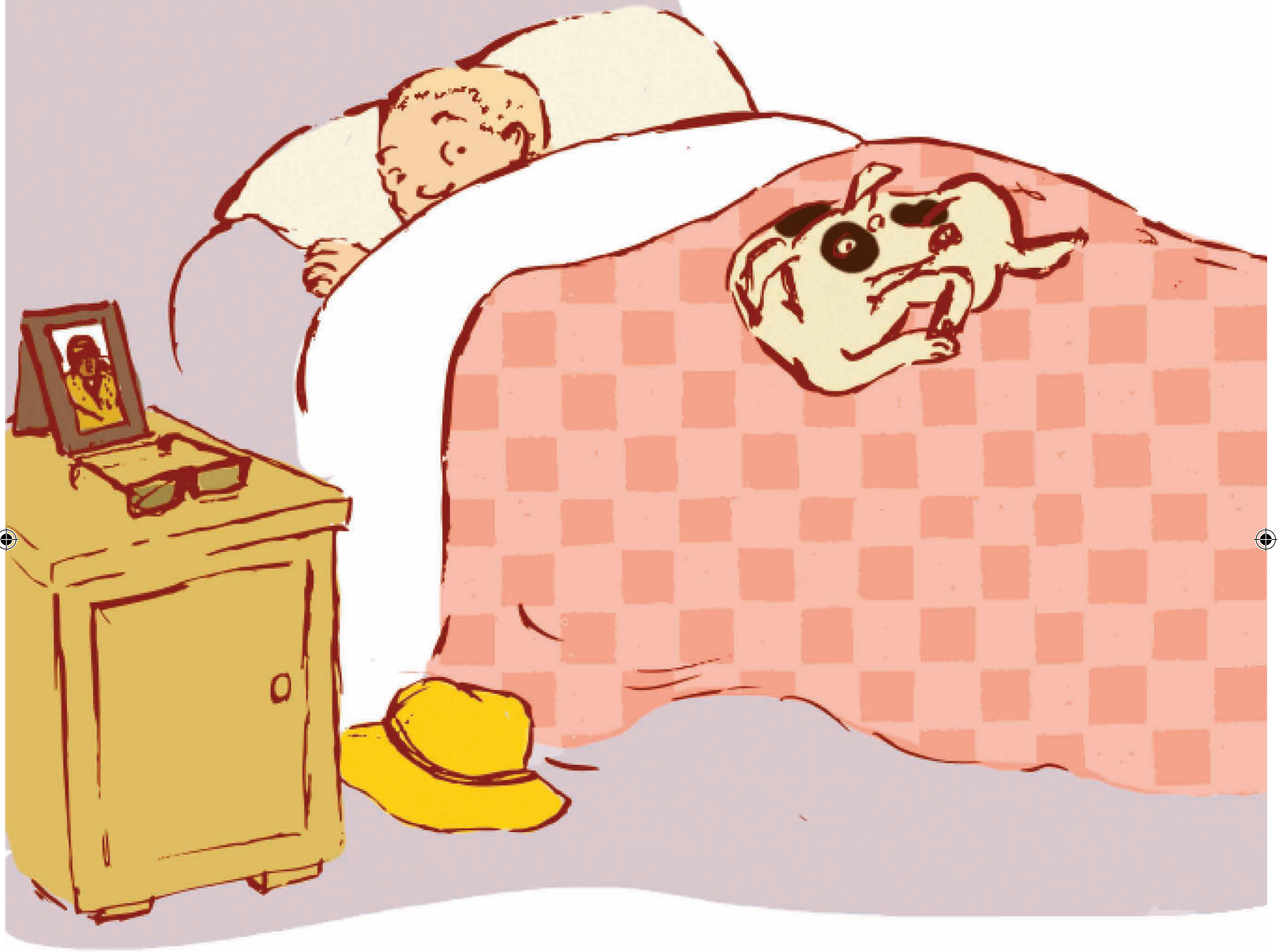
Gogo uvula umshini wakhe wekufunga  
wakudzala. Sewunesikhatsi lesidze  
ungasetjentiswa. Ngelwati lanalo,  
wacala wanciphisa timphahla taMkhulu...

Njengobe umncintiswano utawuba  
ngakusasa. Gogo wafunga  
busuku bonkhe.











Ngelilanga lemncintiswano,  
Lwazi ulele uva buhlungu.  
“Angiyi,” ukhuluma yedvwa. “Ngite lengitakugcoka!”

Gogo umkhomba timphahla latawutigcoka. Lwazi akamange  
awakholwe emehlo akhe. Timphahla setiyisayizi yakhe!





Lwazi wageza masinyane.  
Wagcoka timphahla takhe.





Timlingana ncamashi!





Lwazi waba sihlabani embukisweni,  
ngetimphahla takhe telikhetselo.

Wancoba emncintiswaneni!  
Gogo uyatigcabha kakhulu!







Room to Read South Africa  
1209 Francis Baard Street, The Gables, 1 Floor, Hatfield, Pretoria 0028,  
South Africa  
[www.roomtoread.org](http://www.roomtoread.org)

*Ngemnyaka we-2018, iprojekthi ye-REACH yesekele baka-Room to Read kanye nebashicileli bakuleli laseNingizimu Afrika kutsi babhale tincwadi ngetilimi tabo temdzabu. Ngikhuluma nje ubambe lenye yaletincwadi esandleni! Incwadzi ngayinye icalwe yabhalwa ngeSepedi, siSwati, Xitsonga, Tshivenda nobe ngesiZulu. Letincwadi leti-20 tiyatfolakala ngatotonkhe letilimi, tiyatfolakala futsi nangesiNgisi. Kute utfole kabanti ngaletincwadi, vakashela ekhasini [onedayonebook.org](http://onedayonebook.org).*

*Liputumende*

**The Suitcase**

**Umhumushi nguTimothy Mfana Mongwe**

**Room to Read GSD ID: ZA-ABP-18-0101**

**ISBN: 978-1-928441-27-4**

**Lencwadzi yashicilelwa yakhishwa kwekucala baka Indwa Publishers.**

**Lencwadzi yasungulwa yabhalwa kwekucala ngesiZulu nguMbongeni Nzimande.**

**Idvwetjwe nguElizabeth Pulles naJulie Downing**

**Icondziswe nguLeona Ingram, Riaan Coetzee naKarma Bosman**

**Ihlelwe nguKatherine Hofmeyr**

**Ihlelwe nguSiphelile Marjorie Nkosi (siSwati)**

**ngekusitwa ngekuhlanganyela baka One Day Book labase Johannesburg ngamhla ti-2**

**ngeNhlaba ngemnyaka we-2018.**

**Nangabe ufisha kutsenga letinye taletincwadi, uyacelwa kwekutsi utsintsane nebashicileli bayo:**

**Indwa Publishers**

**Meredale, Johannesburg South, 2091**

**Matthew Jabulani Mngadi | 011 942-5389**

**Leprojekthi ikhokhelwe yi-Results in Education for All Children (REACH) lekusikhwama setimali seLibhange Lemhlaba Wonkhe (World Bank) kanye neGlobal Book Alliance, futsi yesekelwe naLitiko Letemfundvo Lesisekelo.**



Emalungelomcambi alenancwadzi agodliwe onkhe babhali bencenye ngayinye yalencwadzi. Babhali bakhetsa kungena ngephansi kwelayisensi ye- Creative Commons Attribution 4.0, lokusho kutsi nalenancwadzi iphetse leyo layisensi. Ngako-ke nobe ngubani ukhululekile kutsi lenancwadzi angayifundza, angayitsatsa ku-inthanethi, angayihumusha, angayishicilela nobe angayidlulisa kulabanye. Nangabe utawuphindze usebentisa incenye yalencwadzi, kumele kwatiswe lapho uyitsatse khona.

