

# Intfutwane Lelambile



Lencwadzi yasungulwa yabhalwa kwekucala ngeTshivenda nguAzwifaneli Sellinah Maṭamba  
Idwetjwe nguSinomonde Ngwane Icondziswe nguVivienne Preston  
Yahunyushwa isuselwa elulwimini lwayo lweTshivenda nguThembekile Felicia Malibe

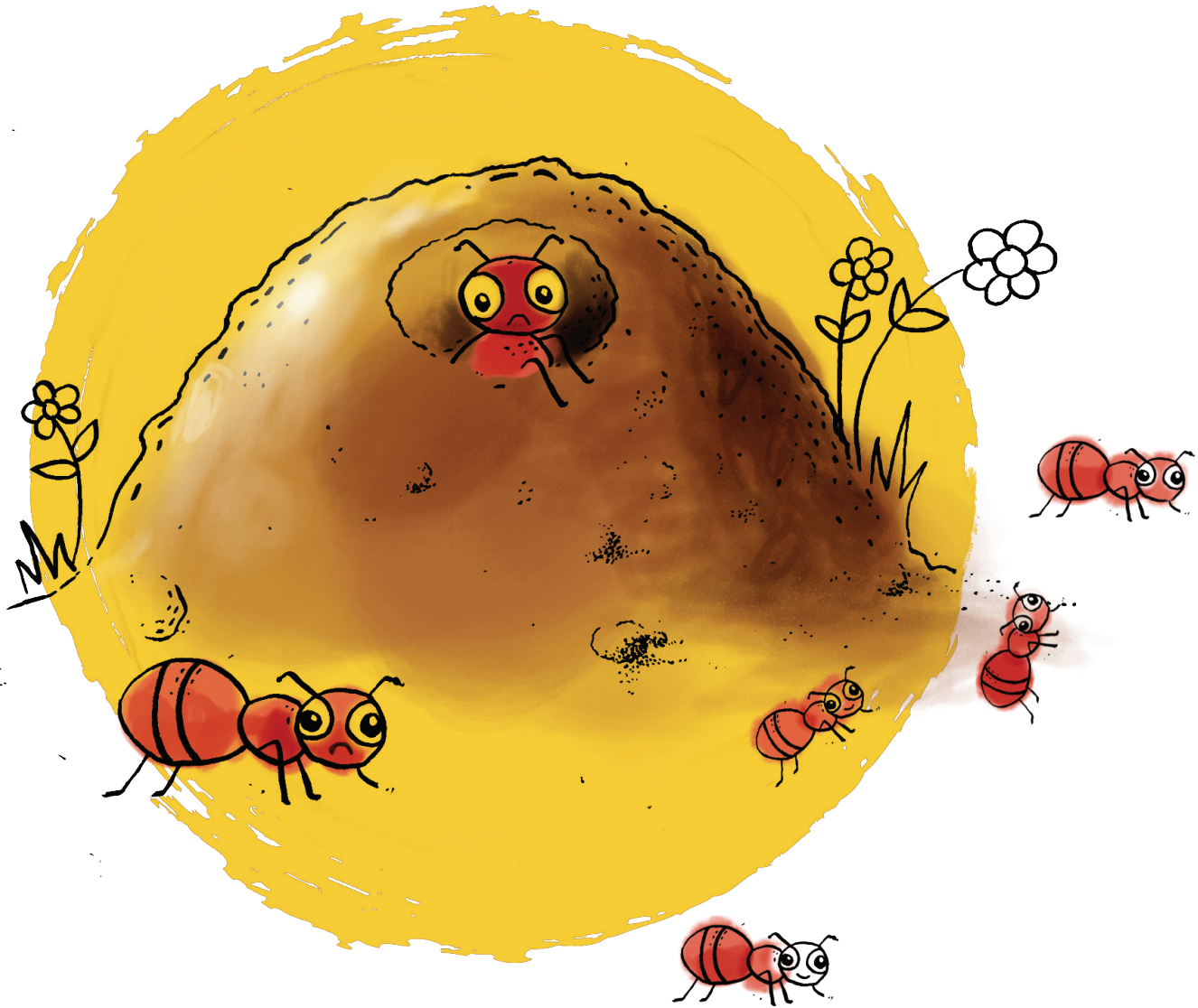


WORLD BANK GROUP



Room to Read®









3

Make Ntfutfwane uhlala emgodzini  
nebantfwana bakhe. “Make, sesilambile,”  
kukhala intfutfwane lencane.

Make Ntfutfwane akumjabulisi kubona  
bantfwana bakhe balambile.

“Akunakudla, bantfwabami. Ngiyaphuma  
ngiyofuna kudla,” kusho Make Ntfutfwane.





4

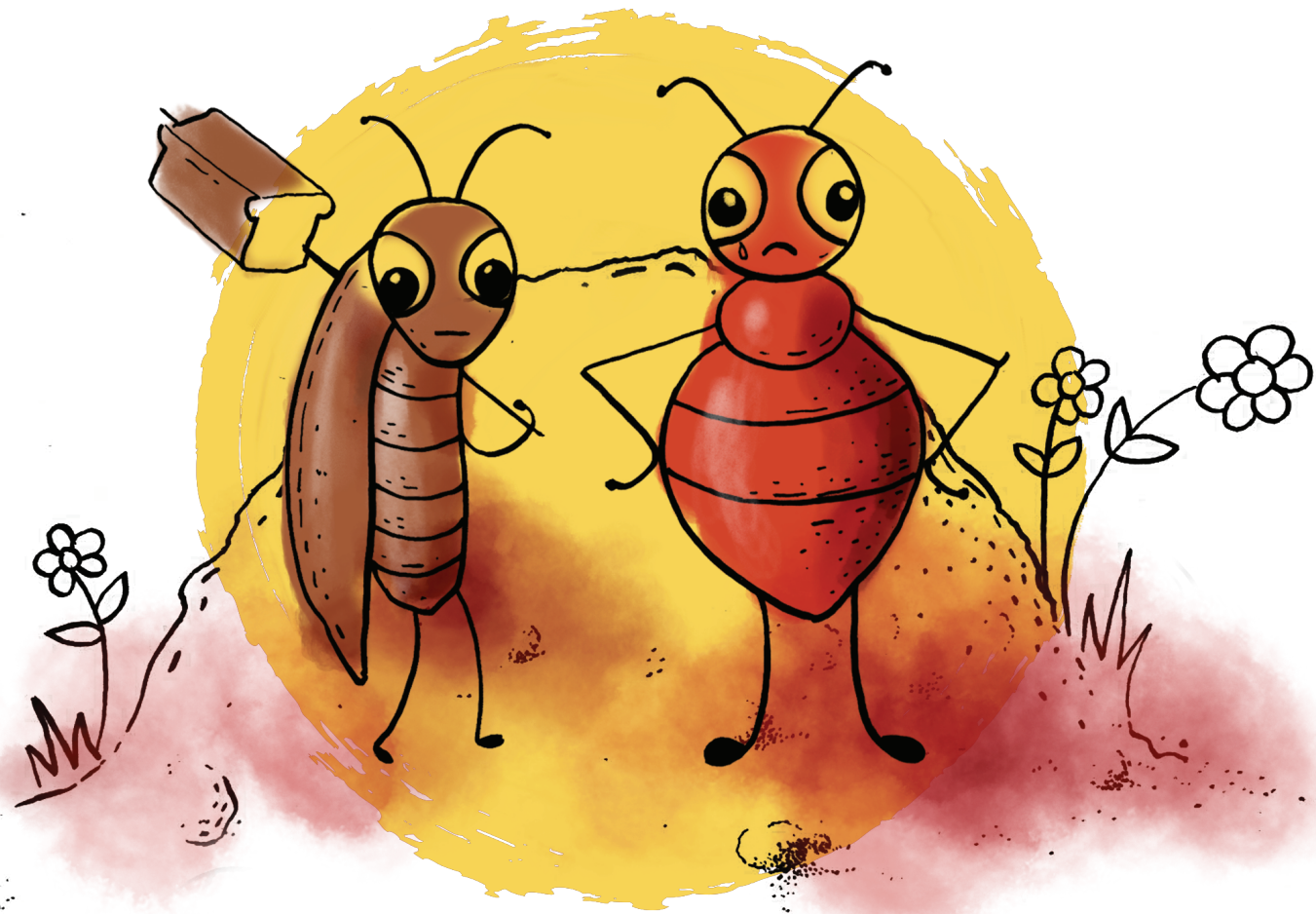


Make Ntfutfwane uya endlini yeLiphela.

“Ngicela kudla,” kusho Make Ntfutfwane.

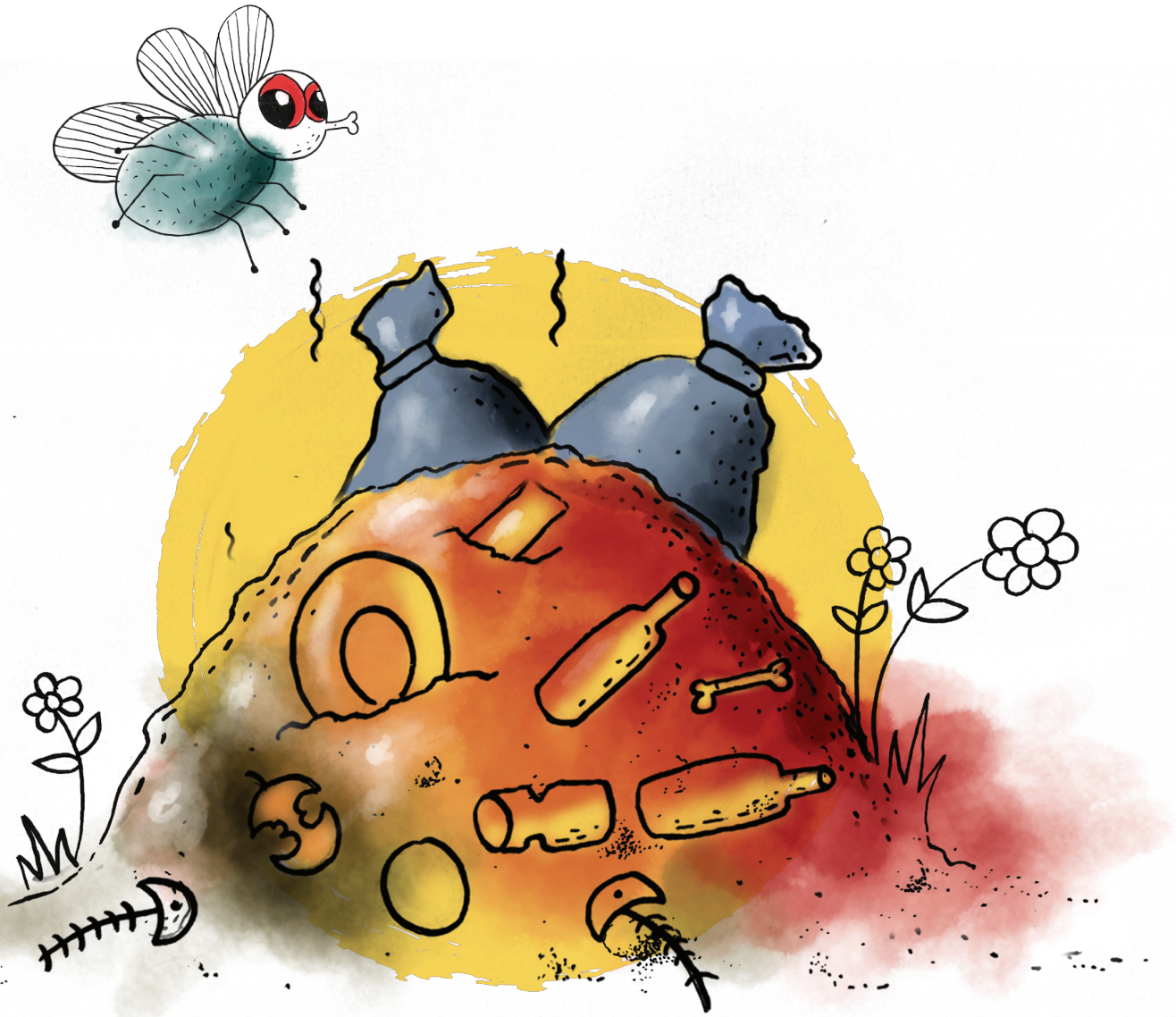
“Angeke ngikunike lesinkhwa ngobe kudla  
kwebantwana bami,” kusho Liphela.

Make Ntfutfwane uva buhlungu kakhulu.





6







7



Make Ntfutfwane uya lapho kulahlwa khona tibi.  
Kunekudla lokunyenti lapho!

“Lokudla loku kwami,” kusho iMphungane.  
Icosha Make Ntfutfwane.

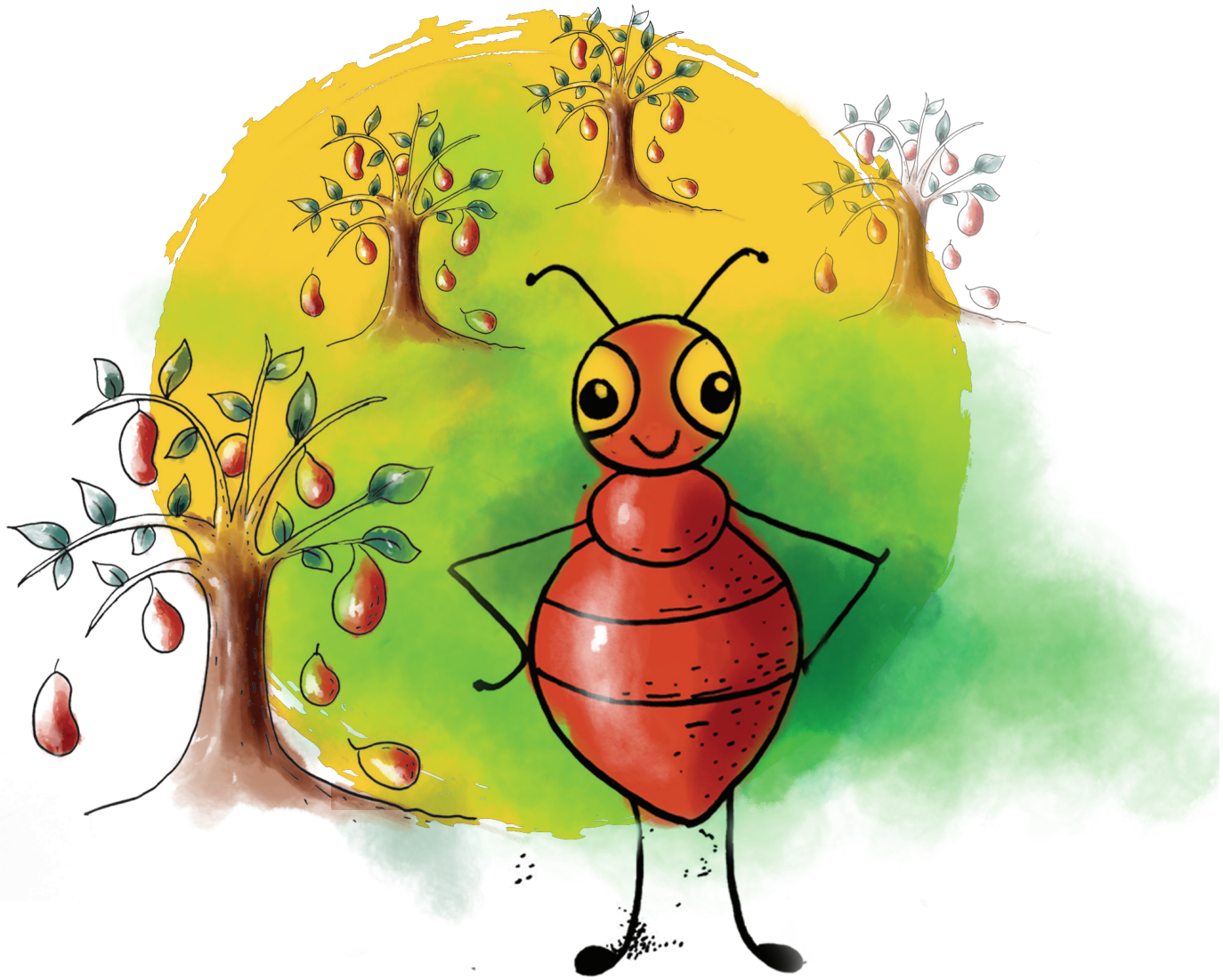


8

Make Ntfutfwane ubuyela ekhaya akanakudla.  
Utfola bantfwana balele futsi sebalambe kakhulu.

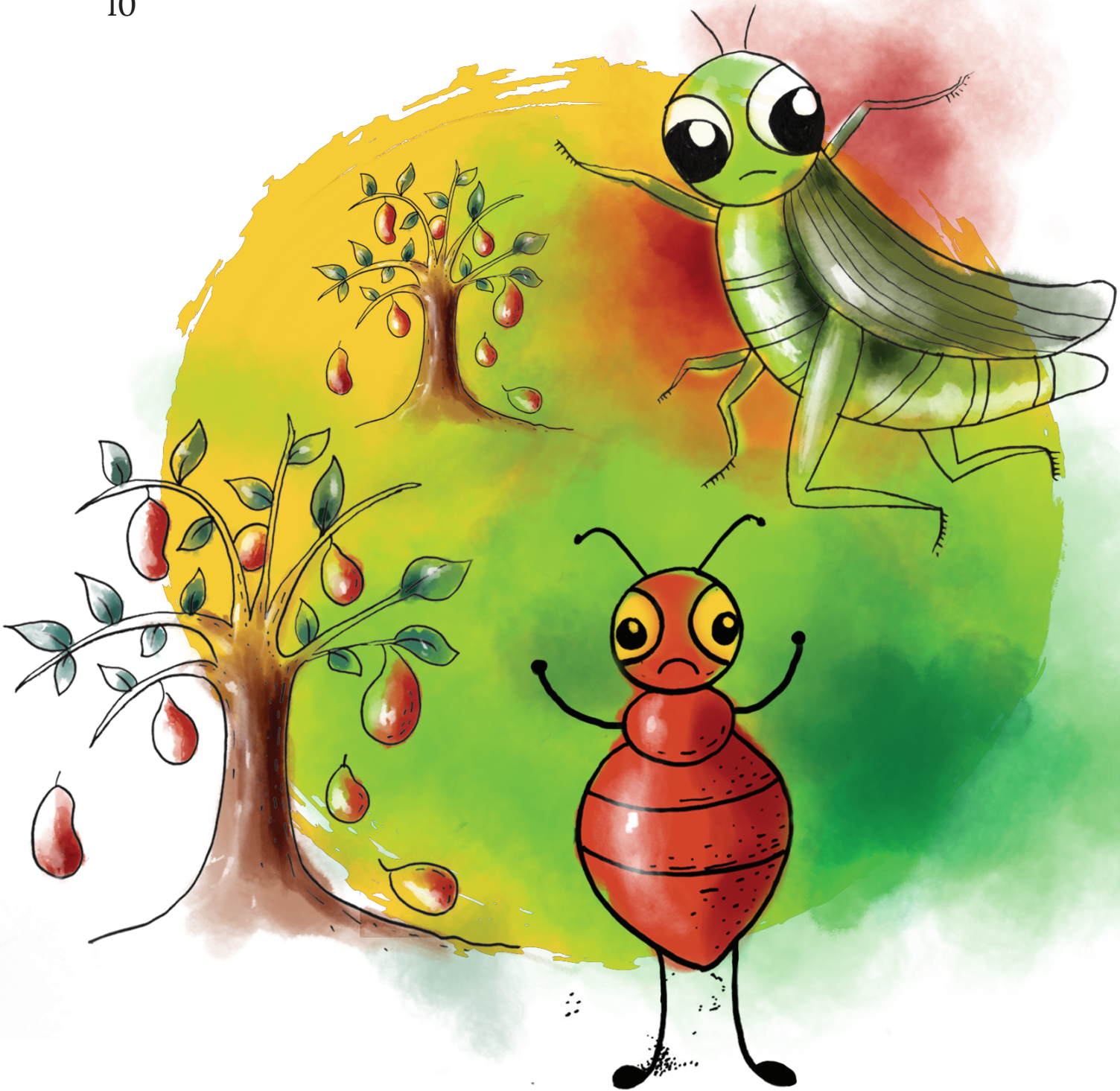
Make Ntfutfwane uya emasimini.  
Ufika utfola kunemangoza lamanyenti.







10





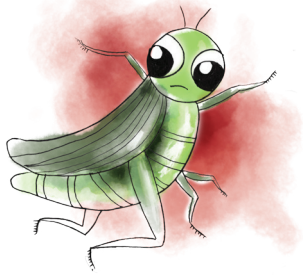


Inkhosi Ntsetse yefika.  
“Uwentani emangoza ami?  
Ungatitsintsi titselo tami,”  
yasho ngekutfukutsela.





12





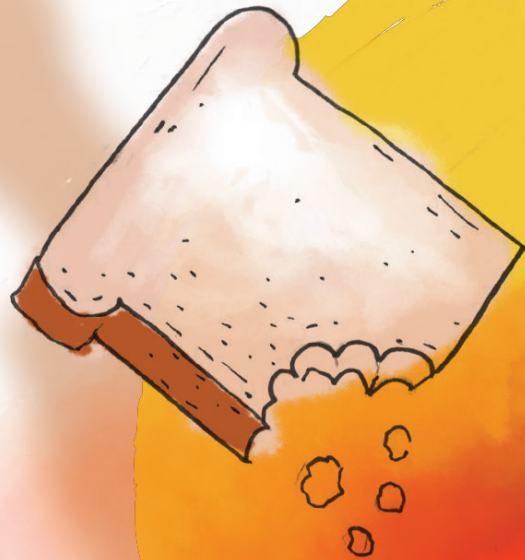
13

Make Ntfutfwane manje sewudziniwe futsi ulambile.  
Uhlala egedeni uyaphumula.

Ngemuva kwesikhashana, kuta umfana uphetse sinkhwa.

Make Ntfutfwane ulandzela umfana uya naye endlini.









15



Umfana wenta litiya nesinkhwa.  
Timvutfu tiwela phasi.  
Make Ntfutfwane ubona letimvutfu.

Kepha kunelikati!  
Likati liyabhodla.



Umfana nacedza kudla, ushanyelela timvutfu  
esitjeni sekubutsa tibi. Uyotichitsa ngaphandle.

Make Ntfutwane uyamlandzela.







18

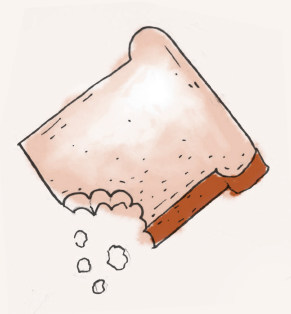






Make Ntfutfwane ukhwela emgconyeni wetibi.  
Lafika likati. Make Ntfutfwane wetfuka wawa!

Likati langena emgconyeni wetibi latsatsa  
sinkhwa lesisele.



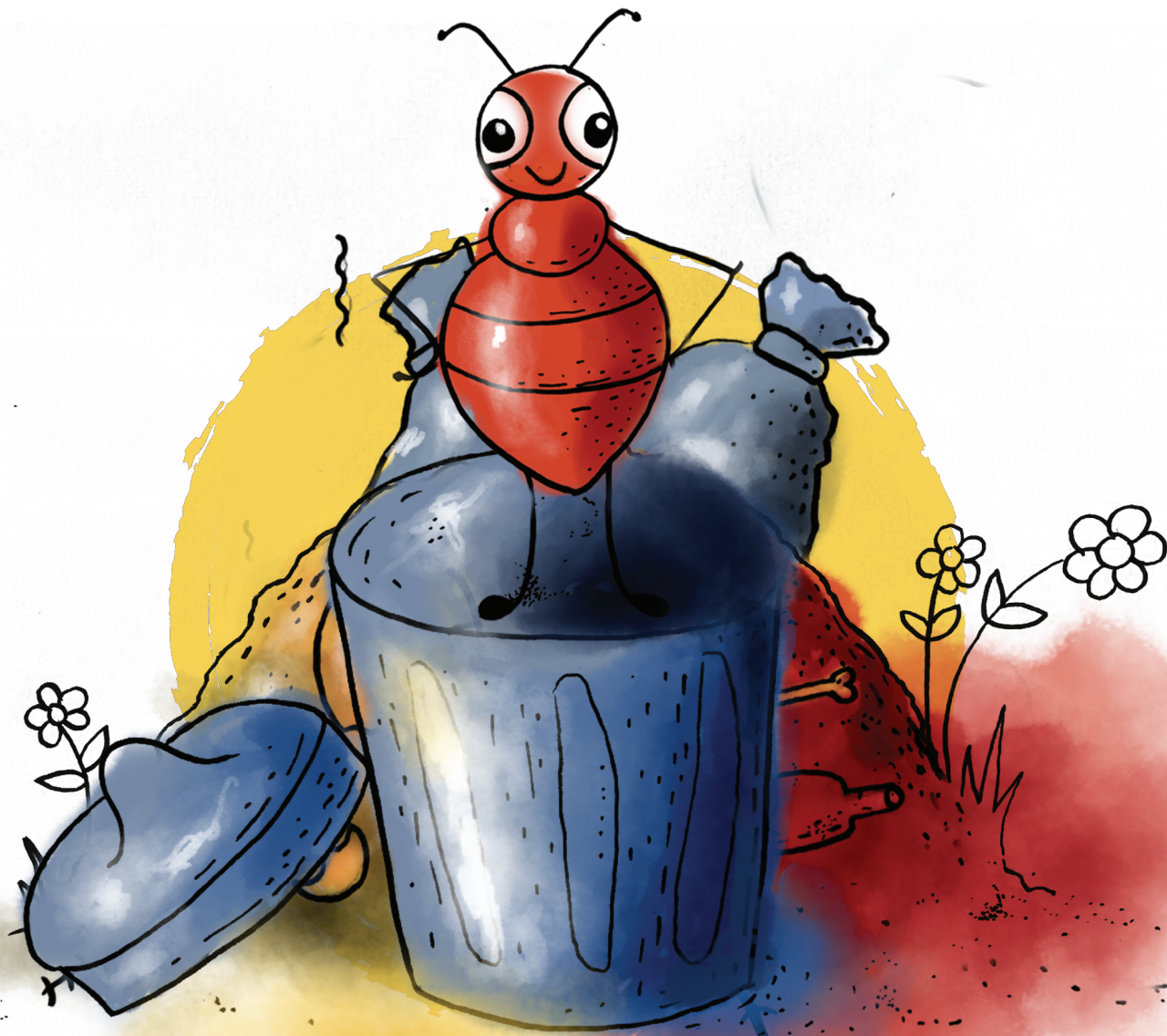


20

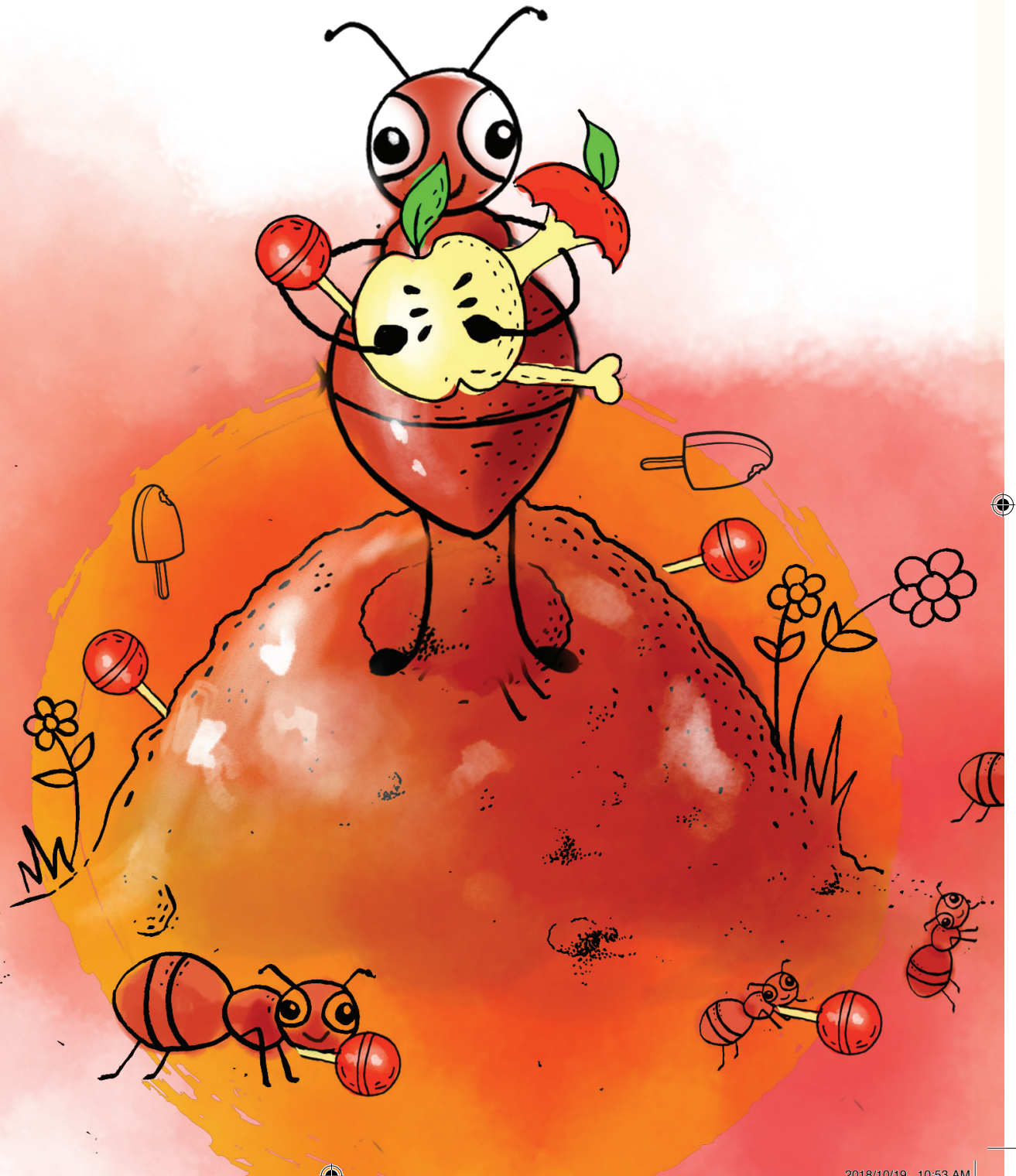


Make Ntfutfwane wakhwela futsi emgconyeni  
wetibi, watsi chwa, etulu emgconyeni!

Wajabula Make Ntfutfwane nabona  
kudla emgconyeni.

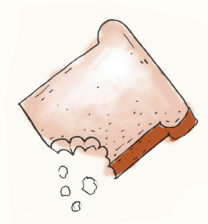








Make Ntfutfwane ubuyela ekhaya nekudla  
lokunyenti! Bantfwana bakhe badla basutsa.







### Room to Read South Africa

1209 Francis Baard Street, The Gables, 1 Floor, Hatfield, Pretoria 0028, South Africa  
[www.roomtoread.org](http://www.roomtoread.org)

*Ngemnyaka we-2018, iprojekthi ye-REACH yesekele baka-Room to Read kanye nebashicileli bakuleli laseNingizimu Afrika kutsi babbale tincwadi ngetilimi tabo temdzabu. Ngikhuluma nje ubambe lenye yaletincwadzi esandleni! Incwadzi ngayinye icalwe yabhalwa ngeSepedi, siSwati, Xitsonga, Tshivenda nobe ngesiZulu. Letincwadzi leti-20 tiyatfolakala ngatotonkhe letilimi, tiyatfolakala futsi nangesiNgisi. Kute utfole kabanti ngaletincwadzi, vakashela ekhasini onedayonebook.org.*

### *Intfutwane Lelambile*

The Hungry Ant

Umhumushi nguThembekile Felicia Malibe

Room to Read GSD ID: ZA-ABP-18-0077

ISBN: 978-1-928441-40-3

Lencwadzi yashicilelwa yakhishwa kwekucala baka Limpopo Faces.

Lencwadzi yasungulwa yabhalwa kwekucala ngeTshivenda nguAzwifaneli Sellinah Matamba.

Idvvetjwe nguSinomonde Ngwane

Icondziswe nguVivienne Preston

Ihlelwe nguAlison Ziki

Ihlelwe nguSiphelile Marjorie Nkosi (siSwati)

ngekusitwa ngekuhlanganyela baka One Day Book labase Johannesburg ngamhla ti-9 ngeNhlaba ngemnyaka we-2018.

Nangabe ufisa kutsenga letinye taletincwadzi, uyacelwa kwekutsi utsintsane nebashicileli bayo:

Limpopo Faces

P.O. Box 5828, Polokwane North, 0750

22 Hyde Park, corner Giraffe and Springbok Street, Fauna Park, 0787, Polokwane, Limpopo, South Africa

Domina Munzhelele | 071 149 6213 | 081 514 2337 | [limpopofaces@webmail.co.za](mailto:limpopofaces@webmail.co.za) | [domina@hotmail.co.za](mailto:domina@hotmail.co.za)

Leprojekthi ikhokhelwe yi-Results in Education for All Children (REACH) lekusikhwama setimali seLibhange Lemhlaba Wonkhe (World Bank) kanye neGlobal Book Alliance, futsi yesekelwe naLitiko Letemfundvo Lesisekelo.



Emalungelomcambi alenancwadzi agodliwe onkhe babhali bencenye ngayinye yalencwadzi. Babhali bakhutse kungena ngephansi kwelayisensi ye- Creative Commons Attribution 4.0, lokusho kutsi nalenancwadzi iphetse leyo layisensi. Ngako-ke nobe ngubani ukhululekile kutsi lenancwadzi angayifundza, angayitsatsa ku-inthanethi, angayihumusha, angayishicilela nobe angayidlulisa kulabanye. Nangabe utawuphindze usebentisa incenye yalenancwadzi, kumele kwatiswe lapho uyitsatse khona.

