



Khovhe I Wana Khonani

Heyi bugu yo thoma i kha Sepedi yo ñwalwa nga Moyahabo Masela
Muoli ndi Gerda Smit Mudzudzanyi ndi Jennifer Jacobs

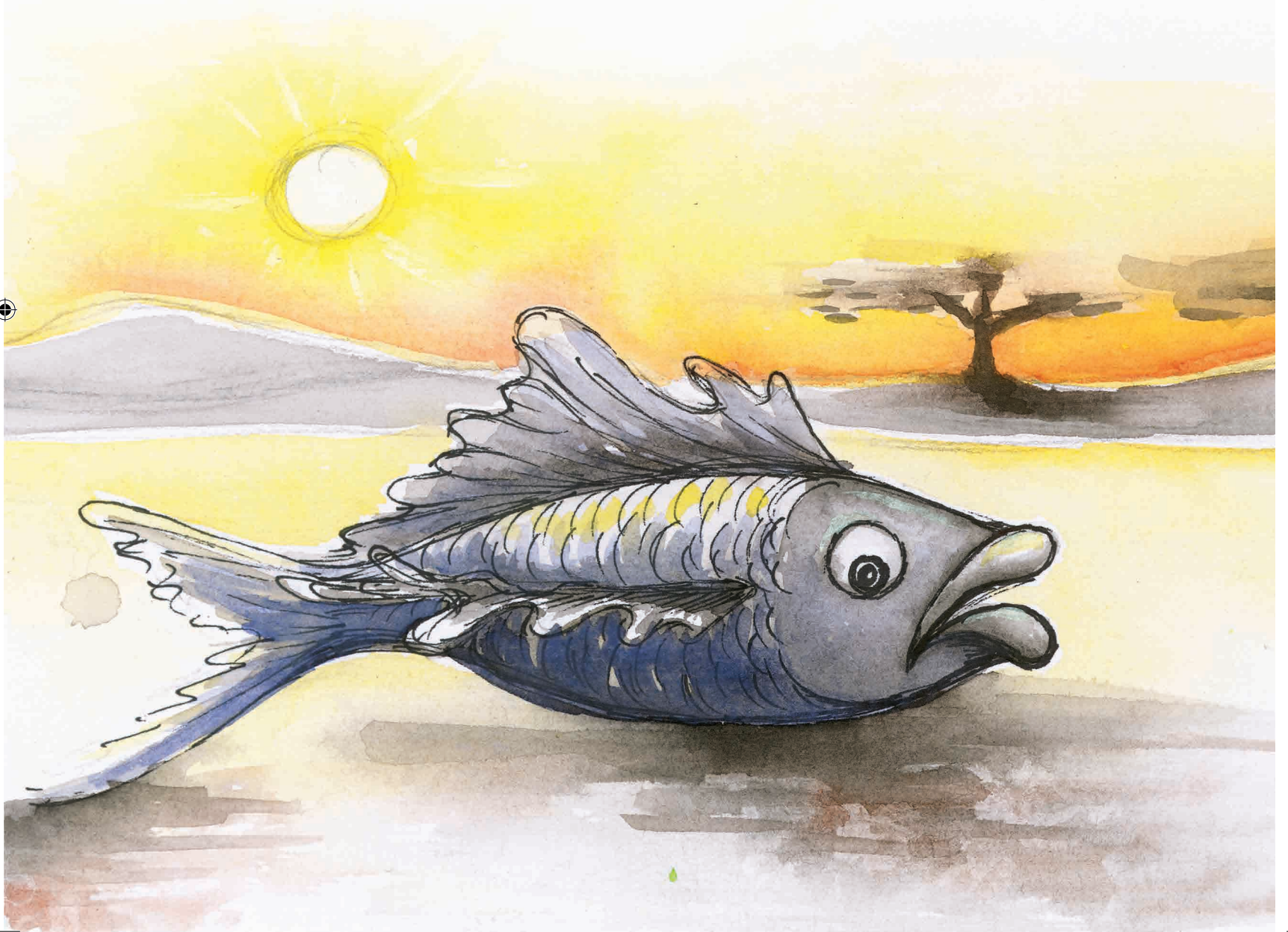


Yo ʔalutshedzelwa u bva kha Tshivenda nga Fhulufhuwani Nomsa Tshililo





2





Zwa Khovhe zwi na vhuṭungu.
Khovhe i na vhuludu.
I tshimbila i tshi ṭoḽa khonani.



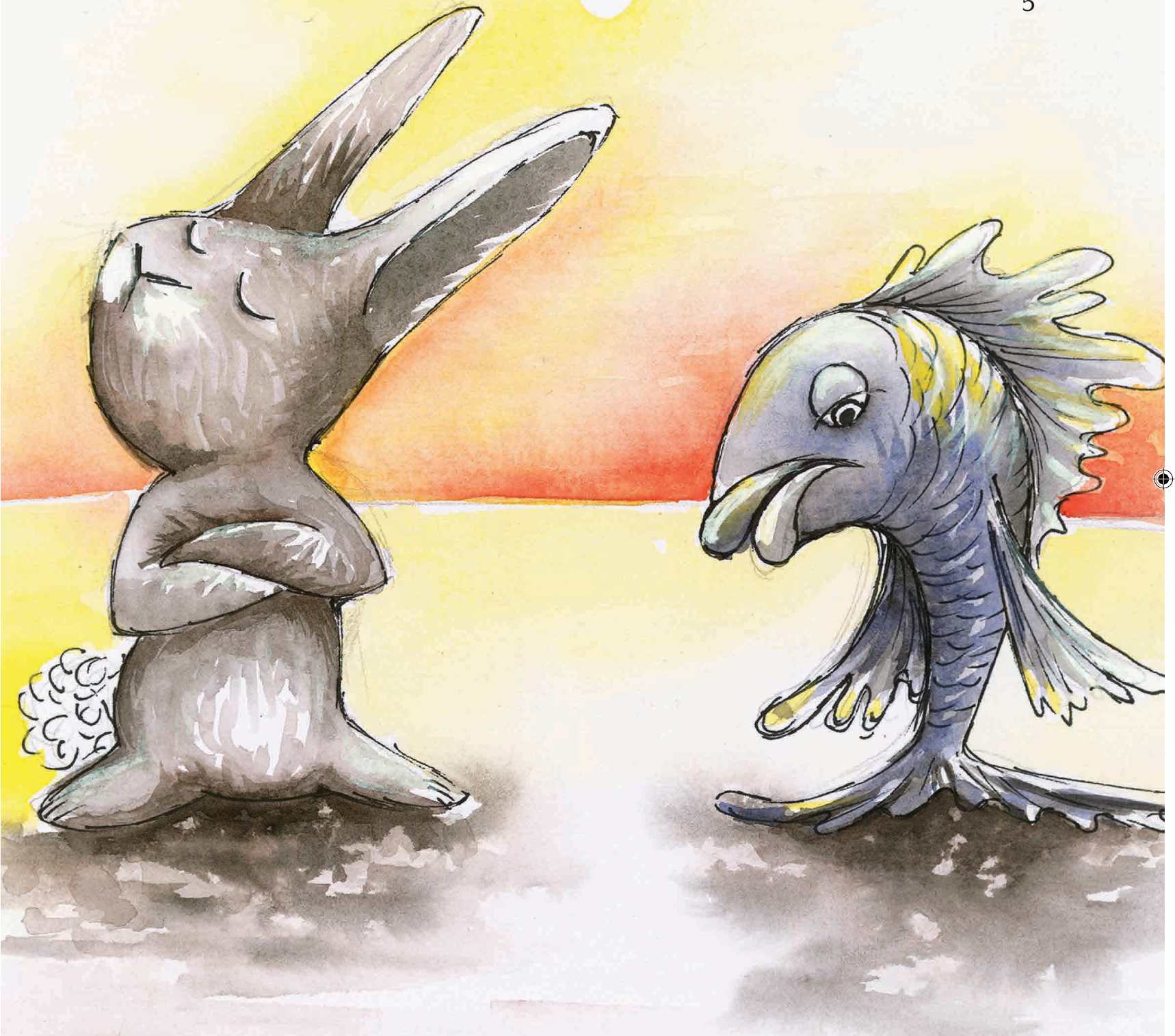
Khovhe i amba na Muvhuda,
“Ndi funa mutshila wanu. U tou nga luswielo!
Naa ni nga vha khonani yanga?”

Muvhuda u a fhindula,
“Nne? Ni khou lora kani? Nne ndi nga si vhe
khonani na muthu a no nukha matope nahone a
si na milenzhe.”

Khovhe ya vhudzisa, “Naa nne ndi a nukha?
Hone ndi ngani ndi tshi fanela u shona uri a thi
na milenzhe?”



5





6





U bva afho Khovhe i ṭangana na Ḷiivha.

“Ndi funa ipfi ḷanu musi ni tshi imba,” Hu amba Khove. “Naa ni nga vha khonani yanga?”

Ḷiivha ḷa ri, “Ṇe ndi nga si vhe khonani na muthu ane maphapha awe a sa shume.”

Khovhe ya fhindula, “Ṇe maphapha anga a shuma zwavhuḁi. Ndi a u fhufha maḁini. A pfi mveki!”

Ḷiivha ḷa ri, “Kurr! Khonani dzanga ṇe dzi fanela u vha dzi fhufhaho muyani nahone ṇtha.”





8

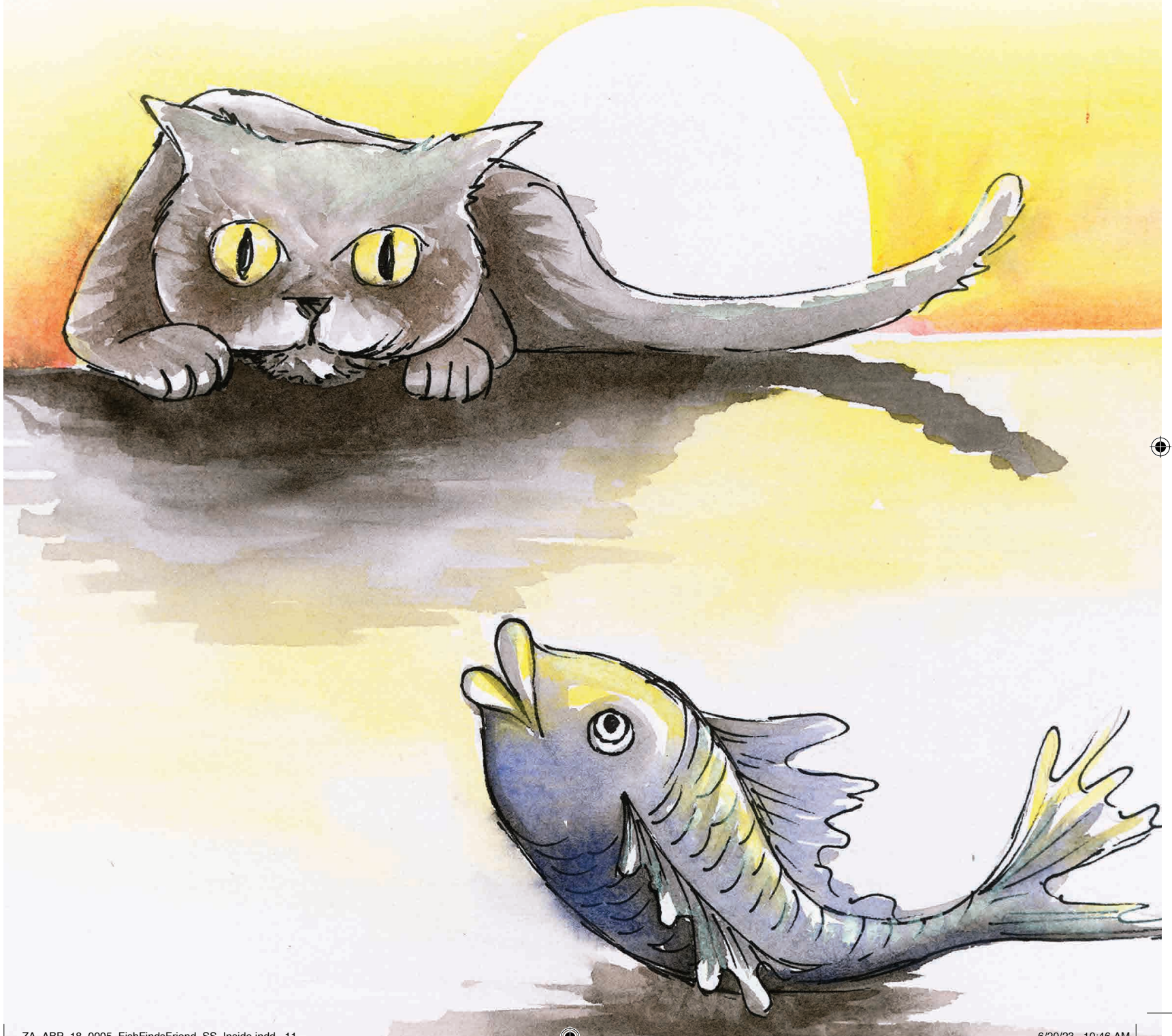




Zwa khovhe zwi pfisa vhuṭungu,
“Naa nṅe ndi ḁo vhuya nda wana khonani?”

Nga vhuya Khovhe ya ṭangana na Tshimange.
Khovhe ya ri, “Roṯhe ri na maṯo a u naka.
Kha ri vhe dzikhonani!”

Tshimange tsha ṅaula, tsho ḡiimisela u lwa.
“Gurrr!”





12





“E-E! Tshimange tshi t_od_a u ndya!”
Khovhe ya fhufhela ma_di_ni.



Mađi a dzikuwa nga n̄thani ha mufemo wa khovhe ye ya vha yo tshuwa.

Khovhe i a awela. “A tho ngo bebelwa u vha ndothe,” Khovhe i dzhia tsheo. “Ndi ɔo dovha nda lingedza hafhu.”





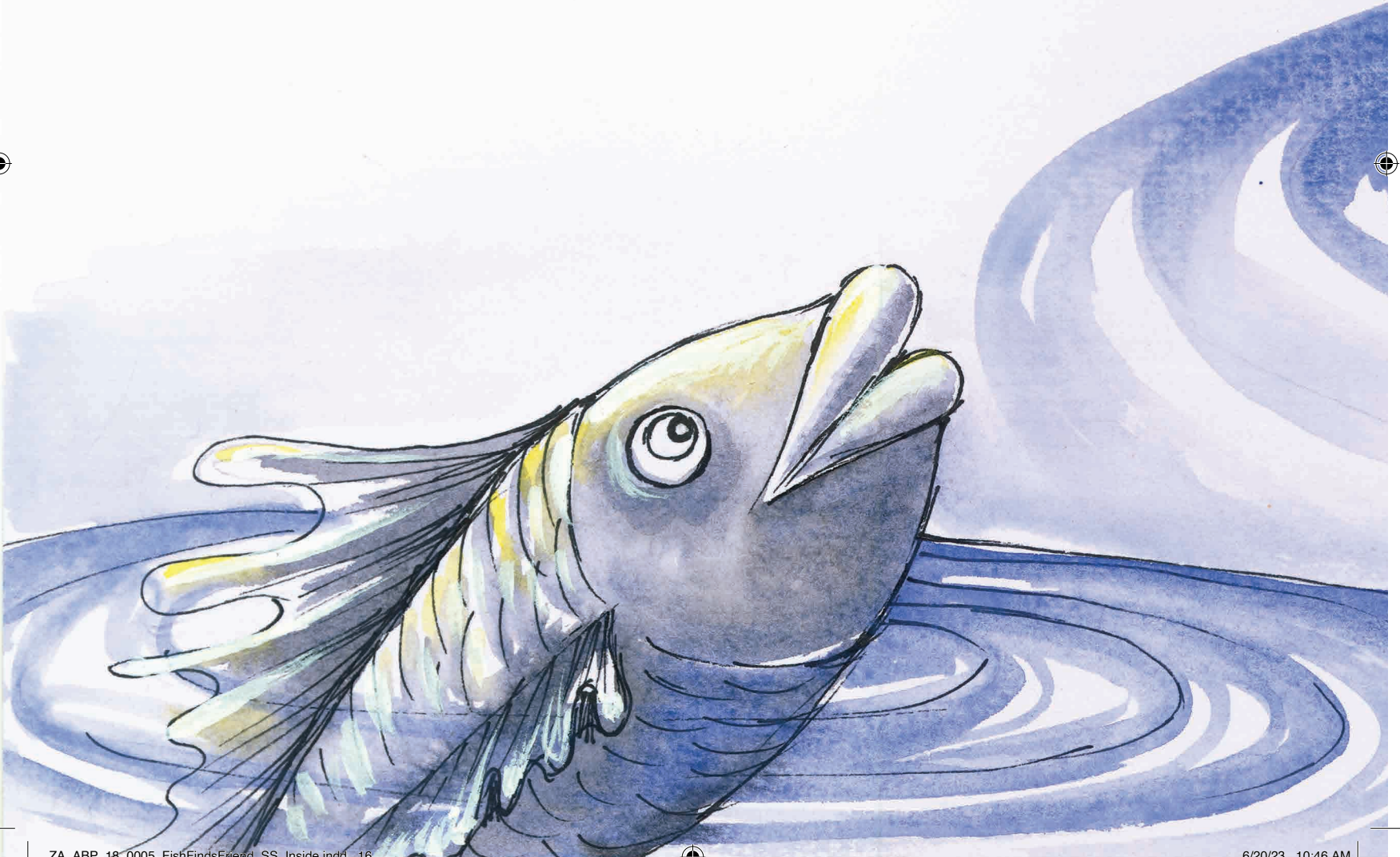
15





16

Khovhe i vhona Tshidula.
“Naa izwi ndi Tshidula!” Khovhe i a vhidzelela.
“Ni a kona u bambela?”





Tshidula tshi a fhindula,
“Nyana. Fhedzi a thi na mveki, ndi a kondelwa
u ditika musi ndi madini.”





“N^hne ndi nga ni fundedza u bambela!” Hu amba khovhe. “I^hdani ni fare mutshila wanga!”





20





Khovhe na Tshidula zwa tamba masiari othe.





22





Na ṅamusi Khovhe na Tshidula ndi dzikhonani.



Room to Read South Africa

1209 Francis Baard Street, The Gables, 1 Floor, Hatfield, Pretoria 0028, South Africa
www.roomtoread.org

Nga 2018, thandela ya REACH yo thusa Room to Read na khamphani dza u gandisa bugu kha u bveledza bugu dza 20 ntswa nga nyambo dza Afurika Tshipembe. Inwe ya bugu dzenedzi vha nayo zwanḁani zwavho! Inwe na inwe ya bugu idzi yo nwalwa nga Sepedi, siSwati, Xitsonga, Tshivenda na isiZulu. Bugu dzoṭhe dza 20 dzi hone kha nyambo idzo na kha English. U wana zwinzhi kha vha dalele onedayonebook.org.

Khovhe I wana Khonani

Fish Finds a Friend

Muṭalutshedzi ndi Fhulufhuwani Nomsa Tshililo

Room to Read GSD ID: ZA-ABP-18-0003

ISBN: 978-1-928441-48-9

Bugu iyi yo ranga u gandiswa nga Balaodi Publishers.

Heyi bugu yo thoma i kha Sepedi yo nwalwa nga Moyahabo Masela.

Muoli ndi Gerda Smit

Mudzudzanyi ndi Jennifer Jacobs

Yo ṭolwa luambo nga Katherine Hofmeyr

nga thusedzo ya vha One Day One Book vho shelaho mulenzhe ngei Johannesburg nga ḁa 2 Fulwi 2018.

Arali vha tshi ṭoḁou renga bugu nnzhi dza bugu ino, kha vha kwame vhaganḁisi.

Balaodi Publishers

76 Hans Van Rensburg St, Polokwane, Limpopo, 0699

Diphete Bopape | 015 297 7967

Heyi thandela yo lambudzwa nga tshikwama tsha masheleni a Education for All Children (REACH) tshi re kha World Bank na vha Global Book Alliance khathihi na thusedzo i bvaho kha vha Muhasho wa Pfunzo dza Fhasi (Department of Basic Education).



Khophiraithi kana vhuṅe ha idzi bugu vhu zwanḁani zwa vhabveledzi vho bveledzaho tshipiḁa tshiṅwe na tshiṅwe tshadzo. Vho nanga uri dzi langiwe fhasi ha tshiteṅwa tsha ṭhanziela i no pfi Creative Commons Attribution 4.0. Zwine zwa amba uri bugu yoṭhe, i wela kha ṭhanziela yeneyo nthihi. Izwi zwi amba uri muṅwe na muṅwe a nga si thivhelwe u vhalo, u daunḁouda, u ṭalutshedzela, u gandisa na u i phaḁaladza bugu iyi. Arali vha tshi ṭoḁou shumisa tshipiḁa tshiṅwe na tshiṅwe tsha iyi bugu, vha tea u bula madzina a vhabveledzi vhayo.

