



# LAÑÓUNDAGUN LALU AWASI



Eduardo Montalvo

Adibuhati Luis Lee

Agarabahei

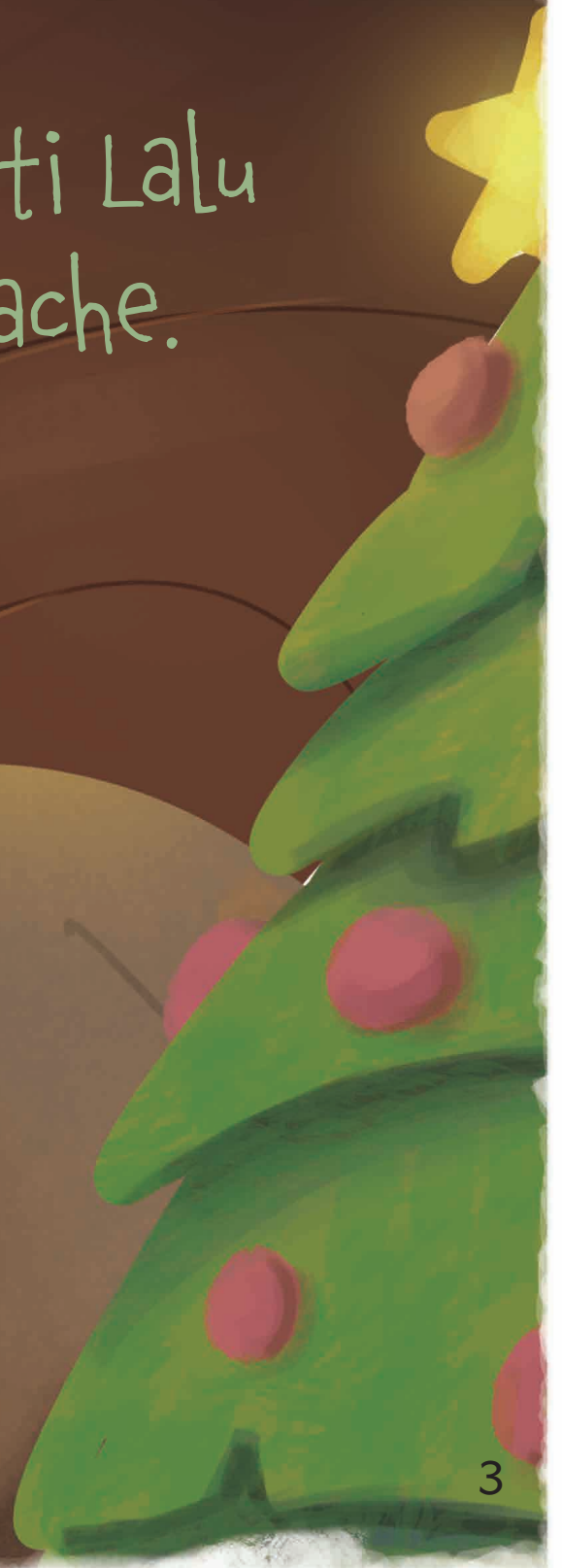
Xiomara M. Cacho, César Vargas Sabio

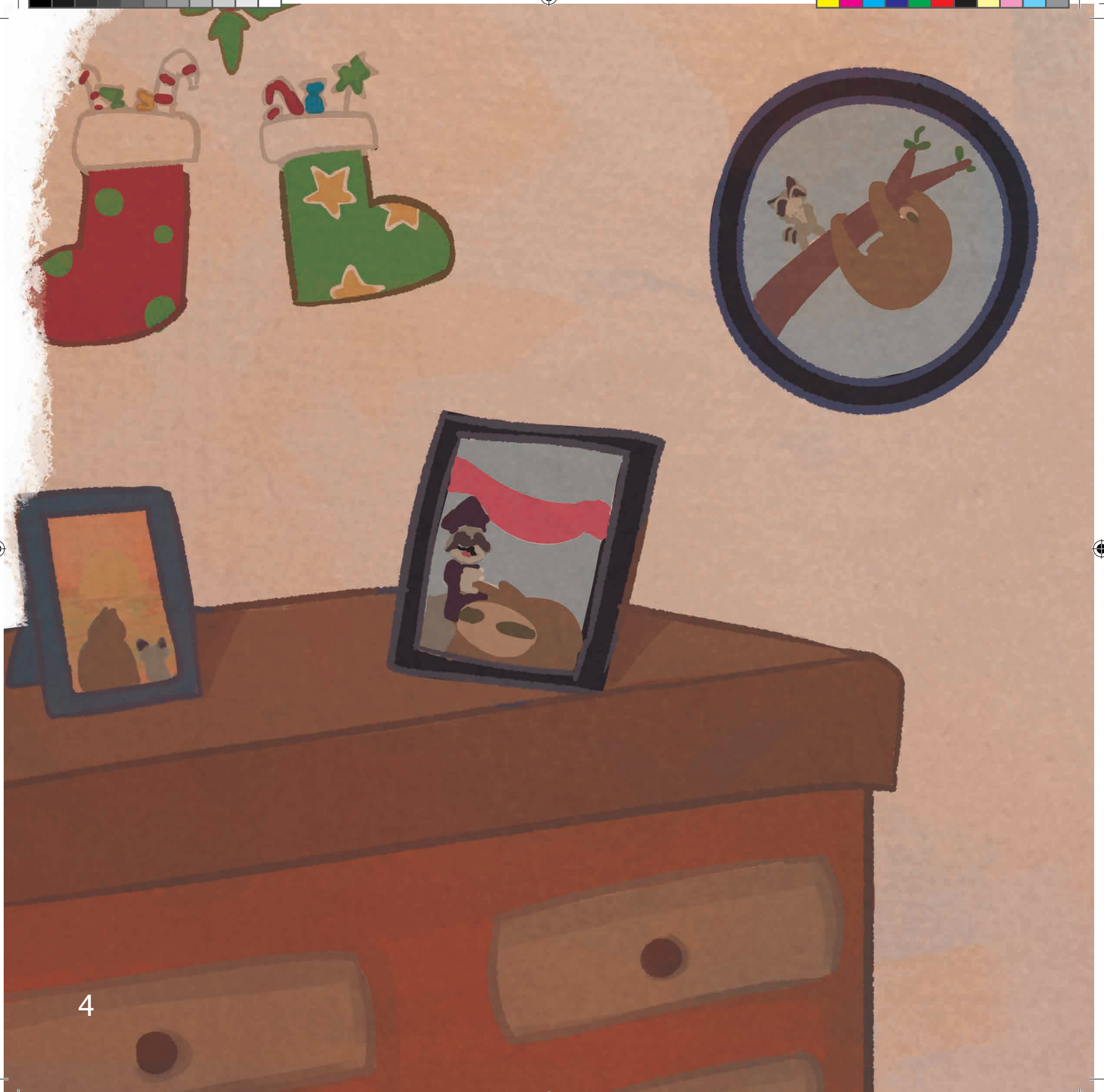






Resipi Lumuti Lala  
Lumada Pache.



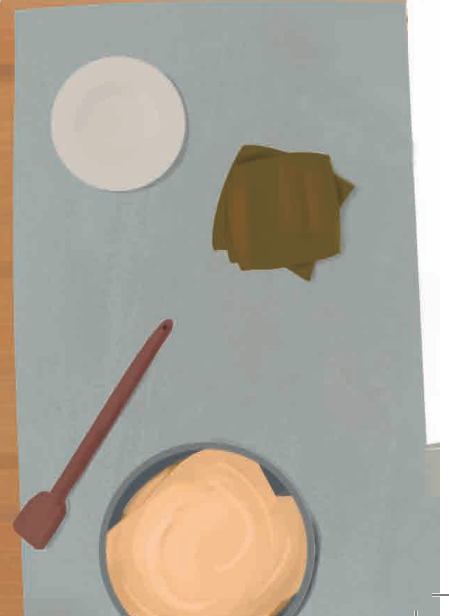


Moşu haranserun lubá  
fedu. *miou*





# Tatíwama





Lichuguña Lala Saragu  
wanini lun  
adundehóuni.

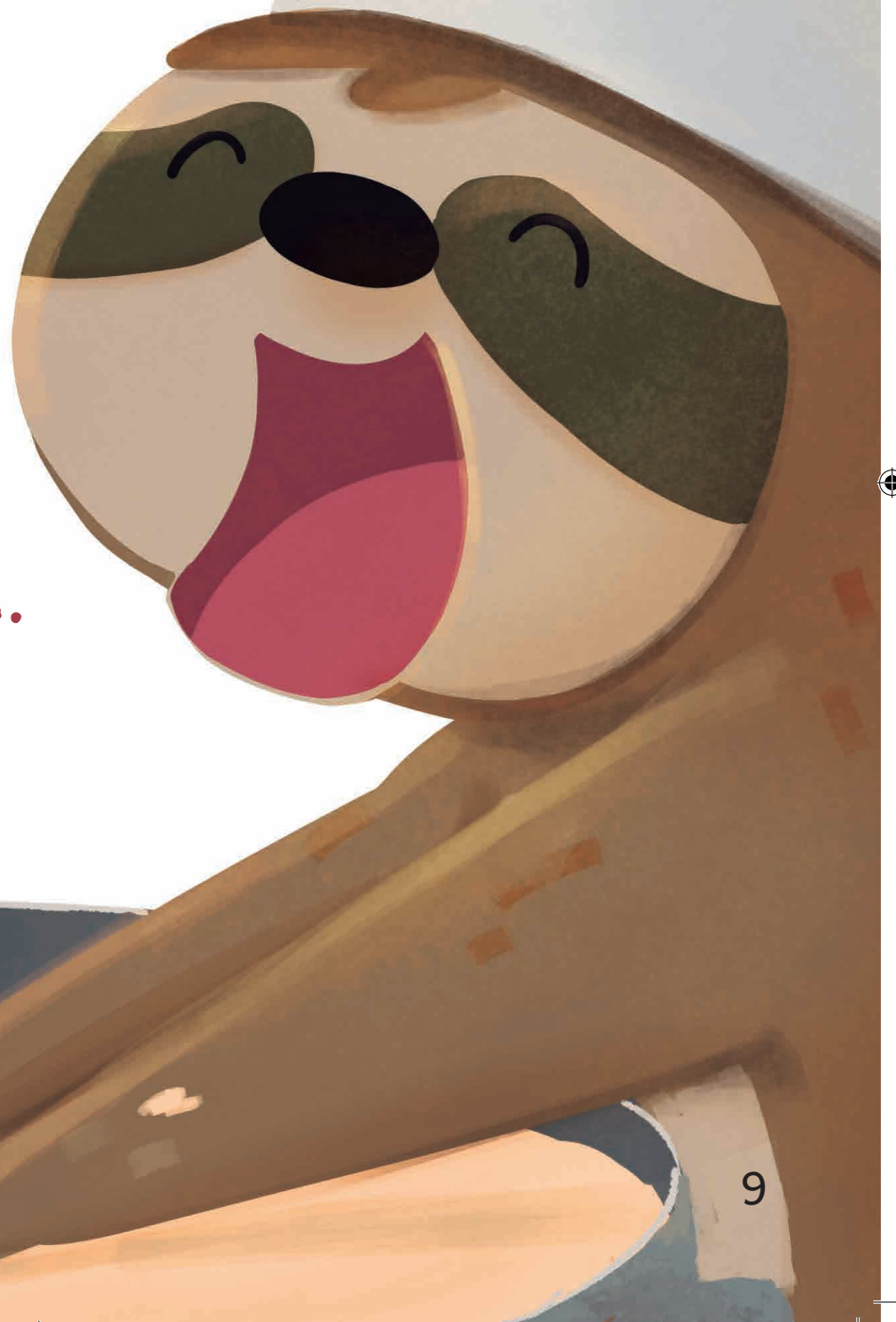




Dumadi, sebuya, láí,  
ati, kulantüru,  
gusewe lubá  
lamulihóniwa.



Lidan lañóundagun  
Lalu awasi,  
ruti ñüruguaü  
Lun daga  
Lumoun  
Ladabudun lagu.





iSará  
Lalu!







Lichuguña  
Lalu arigai.



12



Amulihalumuti Lalu gusewe.  
Hanarimetri Lagararahan dari

Lumoun  
Lagiribudun  
Lau.





iSaraba Lalu!



Aba  
ladaraguni Lalu  
awasi Lidoun



tubana bimina  
tubá gadamalu.





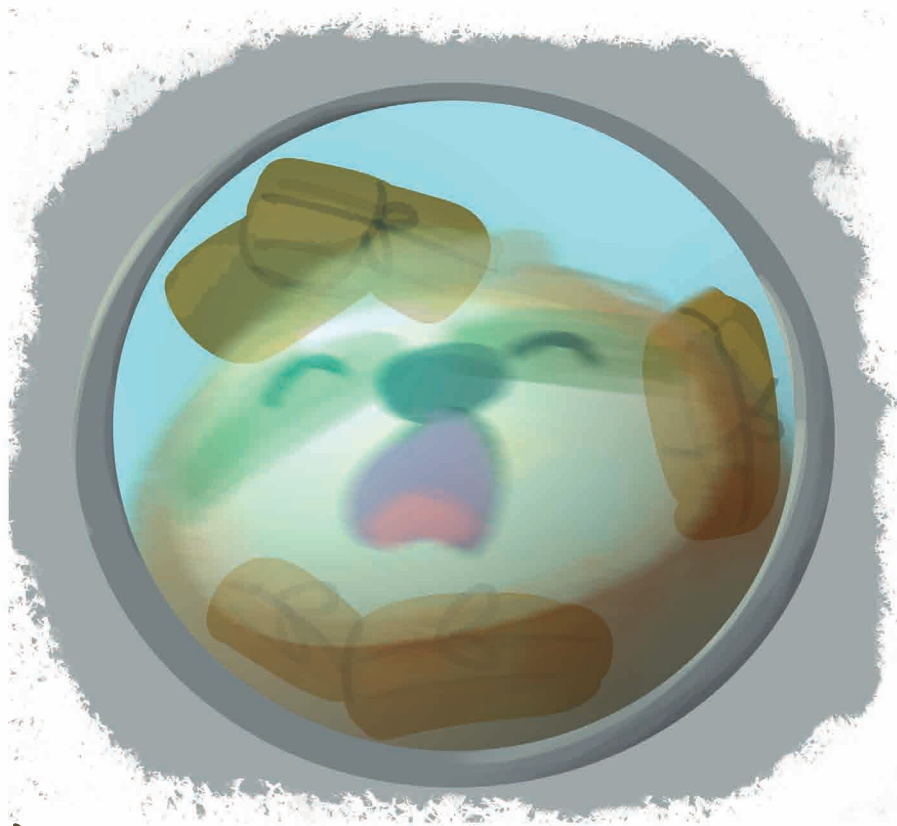
Ñulutu  
kei Ligábana.







Aduga wamoun gadamalu.  
Sianti larúmugun Lalu, mama hafu larúmugun,

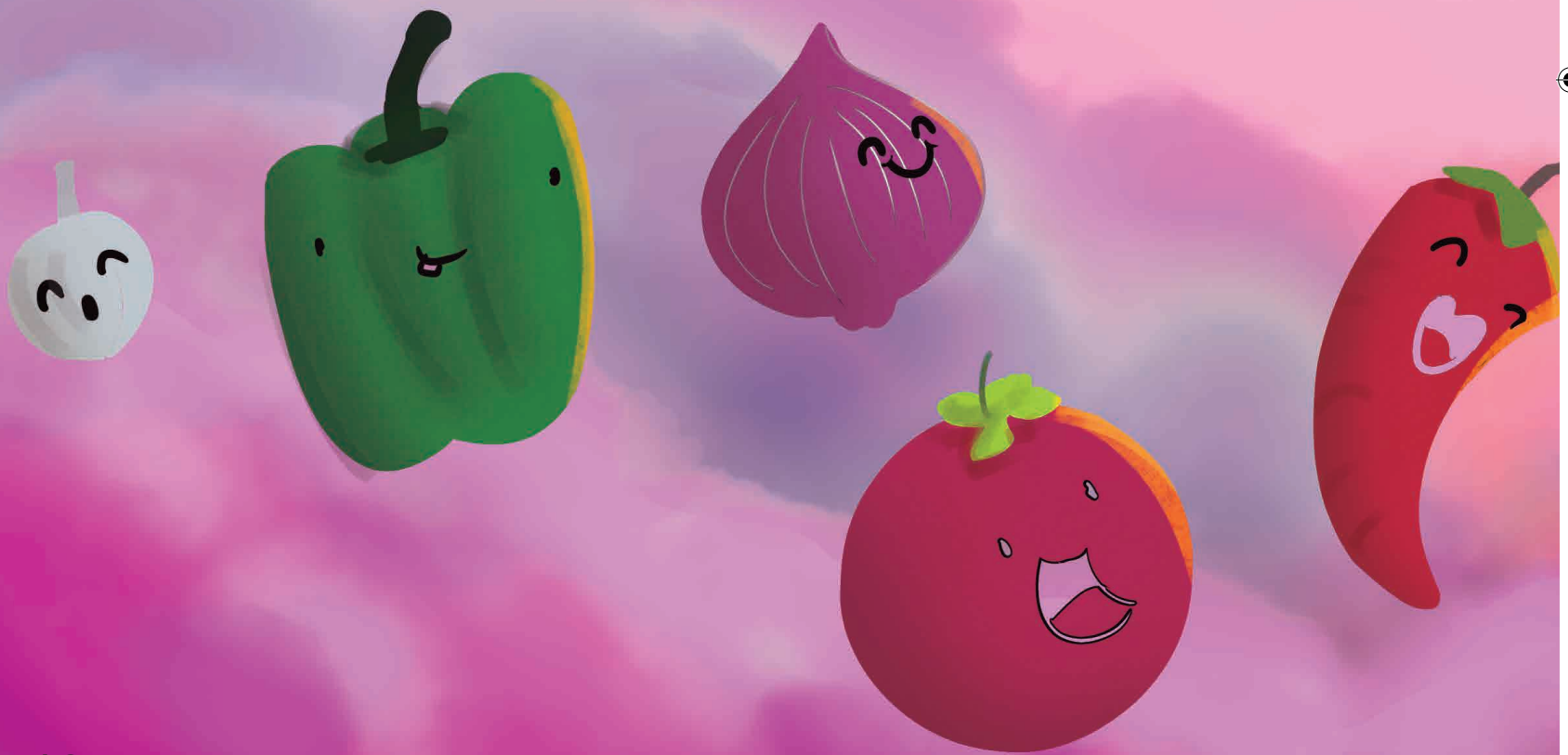


Sianti larúmugun,  
Sianti larúmugun..

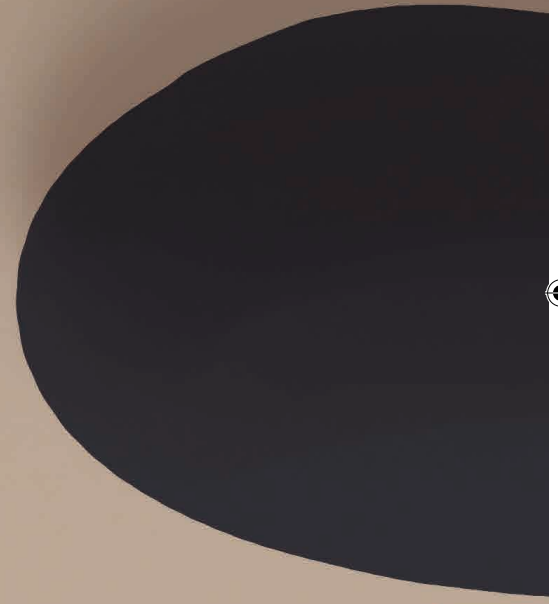




... to my  
arumuga...







iwatu!





iLalu!





Gudatu... murusun.





Moŝu larens(er)un  
pache  
Lubá afaduhani,

madüraguaba tia  
Lalu.



Busiénti Lalo larumugun, gama  
lumoun tagurabahañei gadamalu.



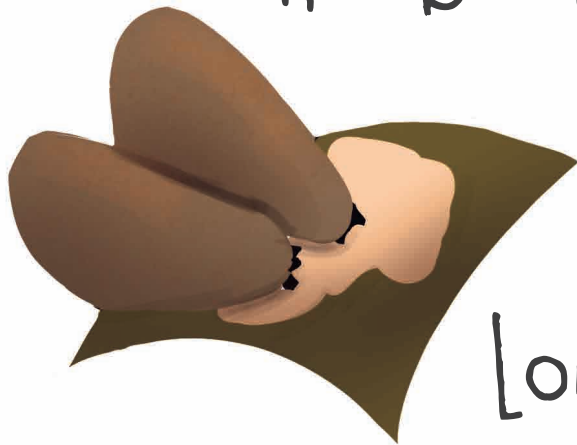




Ñoungualei Lala  
awasi,  
gubulei  
gusewe.



Hóubuelei dabula,  
aburagua



Loun  
gadamaLu.







Gumuhā.





¡Gunda la fedu!



Ligadamalun Lalu tugía  
tima semebon.

Ladüga pachela arufudahabei Lun.



30

