



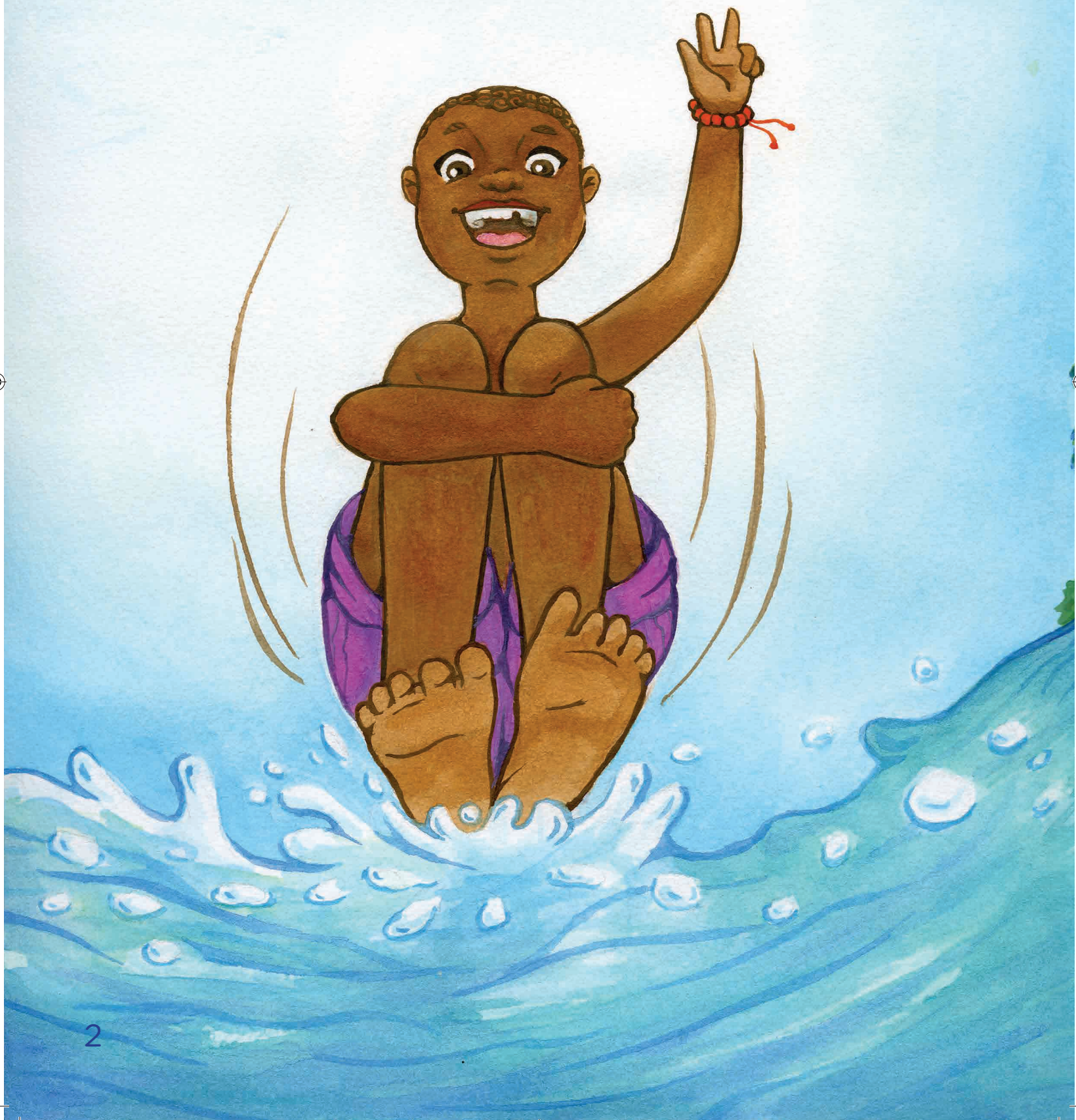
María José Montesinos

Adibuhatu
Wendy Mairena

Agarabahei
Xiomara M. Cacho
César Vargas Sabio

LADÉIRUNI KIM DUNA

Háhuñaguñon yebe bian ümadagu
burichi. Aba gubei lasaminarun
Kim ladílrin lingua lubaragien
lachülürün munadon.



Dan le léiguadun dunarugun aban
laféidiruni libangüle
funati, aban latatirun
aluahei.

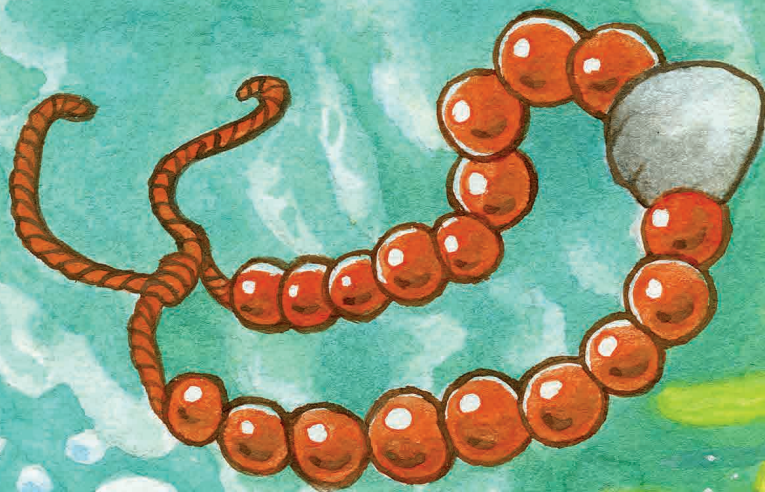
IKIIIM!
IKIIIM!







Dan le dunaruguhali,
aba lawéiridun lanigi luagu
sun le larihinei.



Laganagua
wamurede larihaña
uduraü da
héigiñala.





Arihalaña huwa
aramudagua luei léiti,
habu singaga
áhurara hamawagua
ligibiagu duna.



Anihei fulasu
le ñein lumuti
herala leibagun
duna, anirei
giñe le ñéilumuti
hamarula.

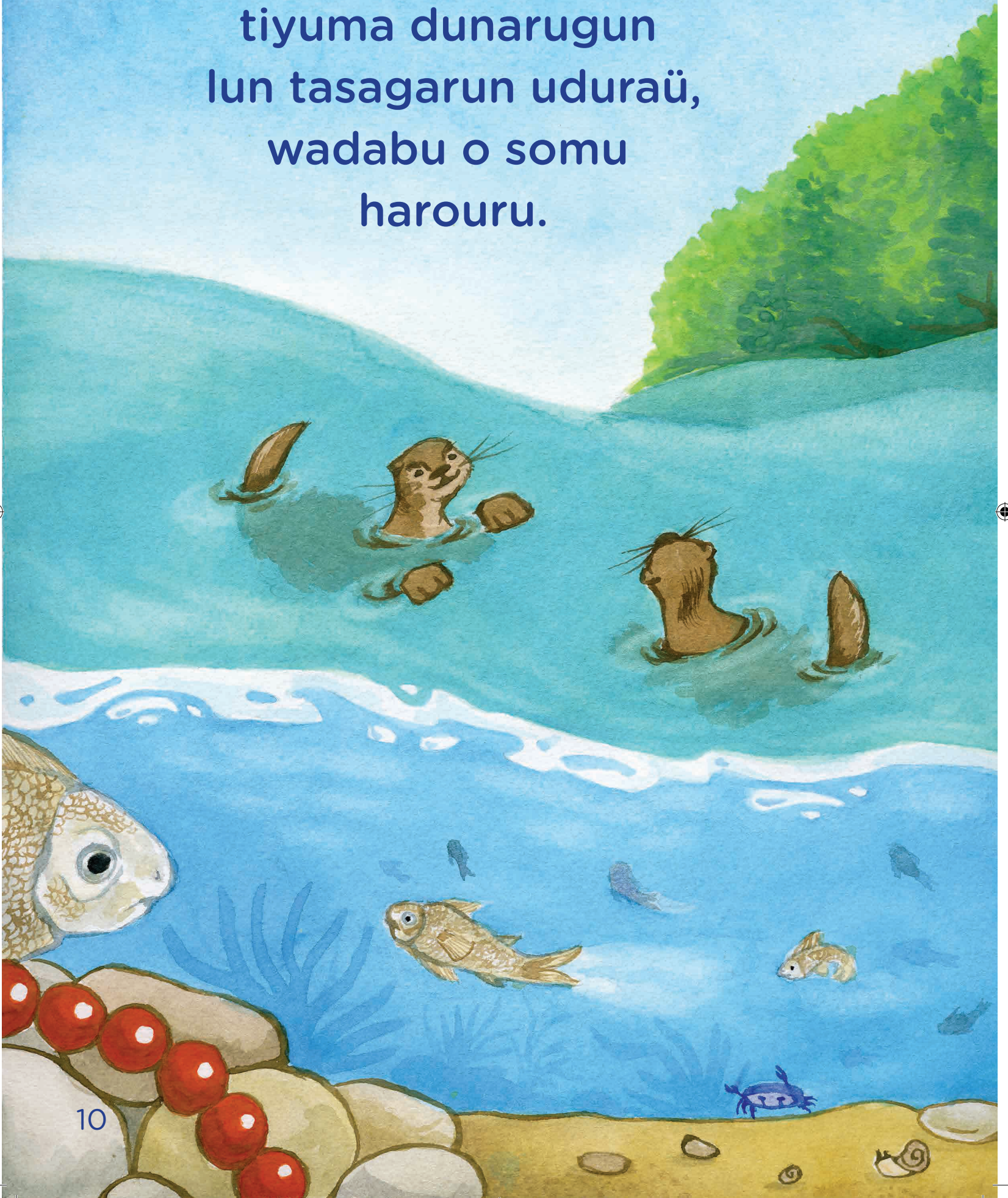




Lidan
lidanei duna
hadibiha
nutriagu.



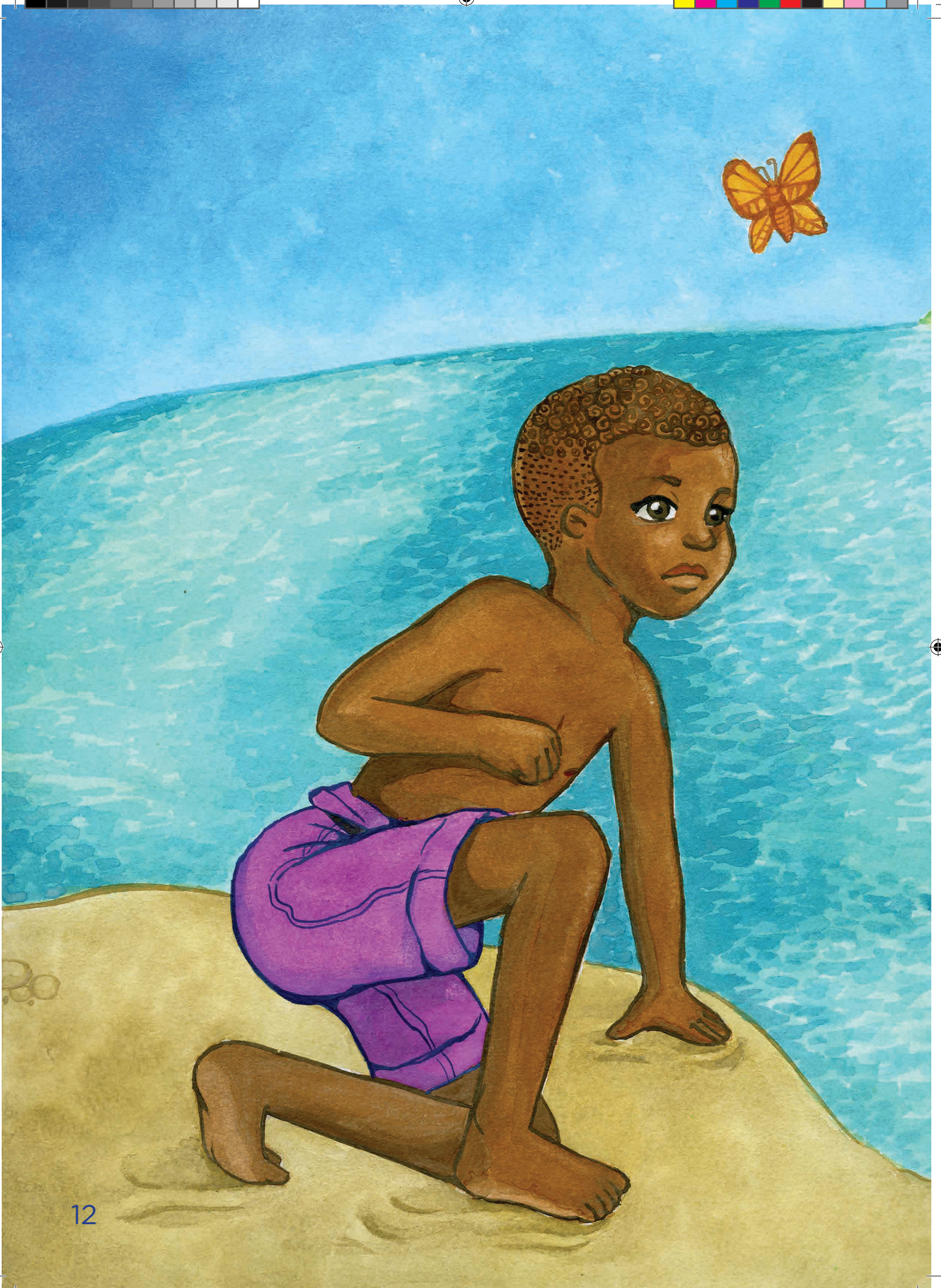
Datumuti yabura limigifen
tiyuma dunarugun
lun tasagarun uduraü,
wadabu o somu
harouru.





Lirounu dübü
aseriwidubei houn hañügüri
animalugu hama korali
hasefuragüleme.







Laru duna,
sodini aba larihin
Kim aba katei funati,
furesegueina aba layarafadun,
samineina “nibangüle”
gama lumon...



...mama funabuga libangüle!
Lifuna tagu huwa tarihubei anùaha
taugua le tanufude.





Seremei tun huwa,
lariha Kim aban kolibri
arufudaha lau liùma luagun
libangüle Kim.

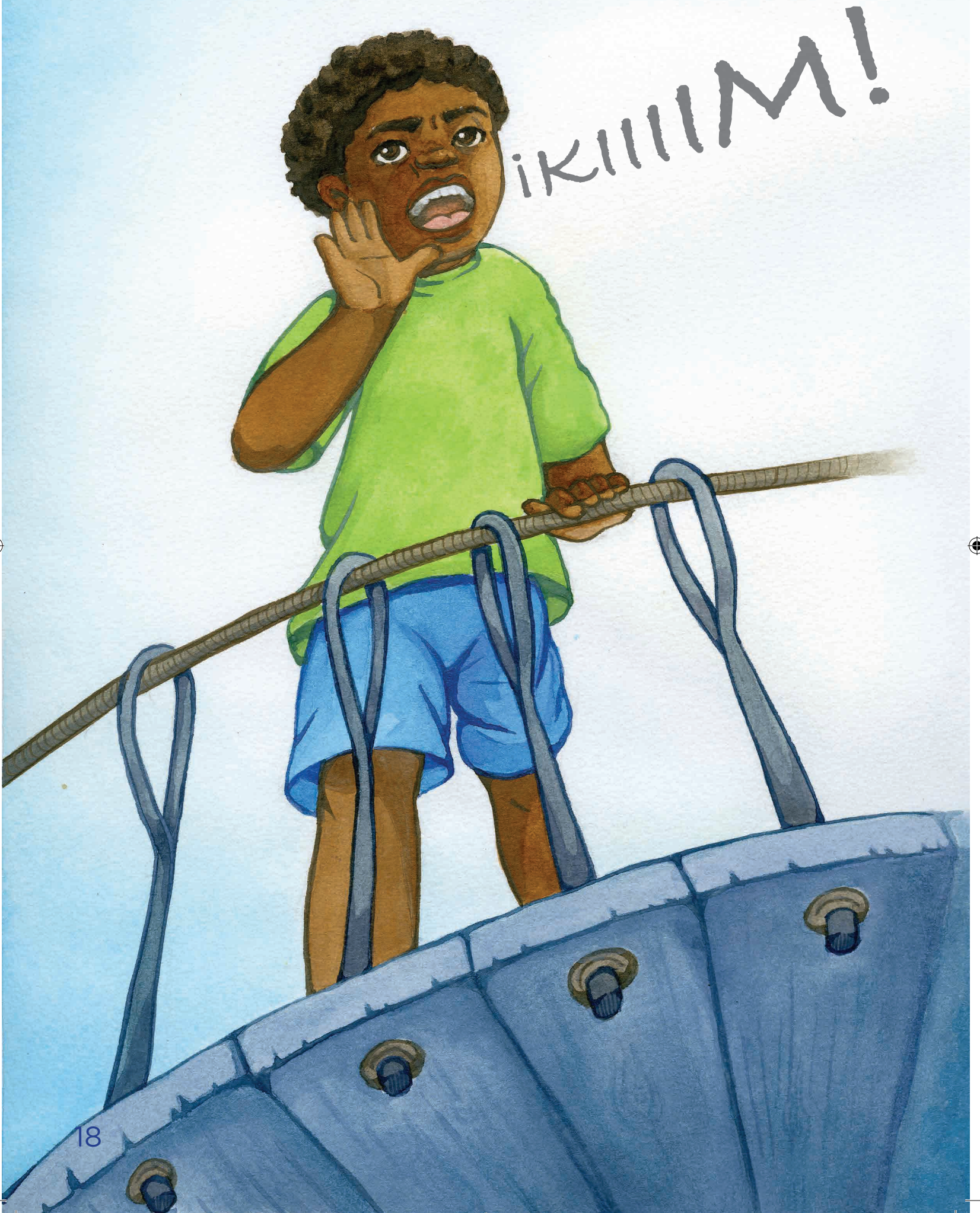




Lau saragu igundani
lanüga murusun dan lun
lichugun seremei.

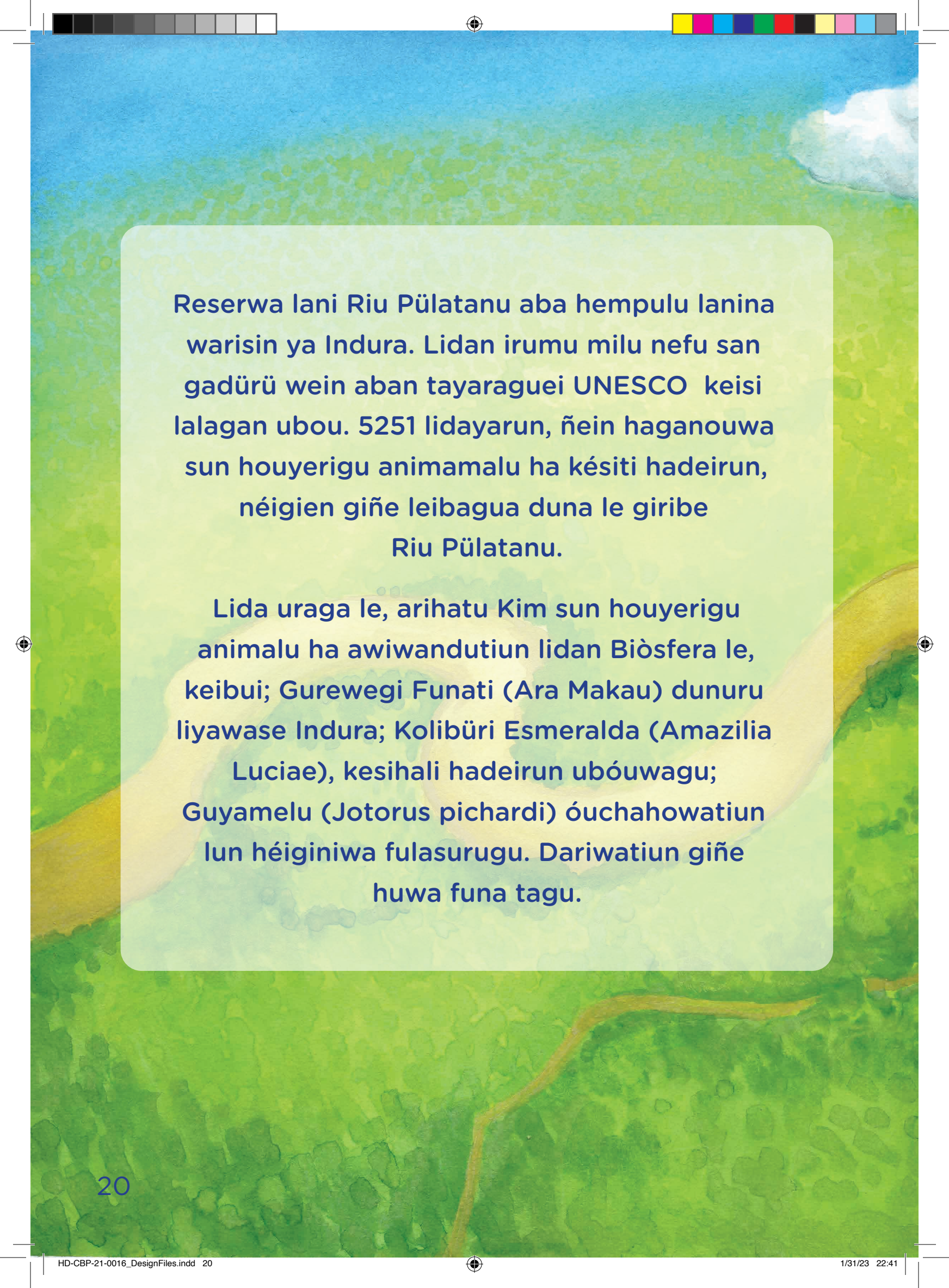






“iDarinali!, giribu
wamà munadon”.





Reserwa Iani Riu Pülatanu aba hempulu lanina warisin ya Indura. Lidan irumu milu nefu san gadürü wein aban tayaraguei UNESCO keisi lalagan ubou. 5251 lidayarun, ñein haganouwa sun houyerigu animamalu ha késiti hadeirun, néigien giñe leibagua duna le giribe Riu Pülatanu.

Lida uraga le, arihatu Kim sun houyerigu animalu ha awiwandutiun lidan Biòsfera le, keibui; Gurewegi Funati (Ara Makau) dunuru liyawase Indura; Kolibüri Esmeralda (Amazilia Luciae), kesihali hadeirun ubóuwagu; Guyamelu (Jotorus pichardi) óuchahowatiun lun héiginiwa fulasurugu. Dariwatiun giñe huwa funa tagu.