

Dimitri ingnika nani

Estephany Maradiaga

Bila wâlara lakanka
Scott Wood Ronas


Lilkika Papaskra
Olvin Danery Torres Osorio





2






Dragun Dimitri ba ai ritska ba
wal kan kau silpi sa...
Lalahmâ kum.

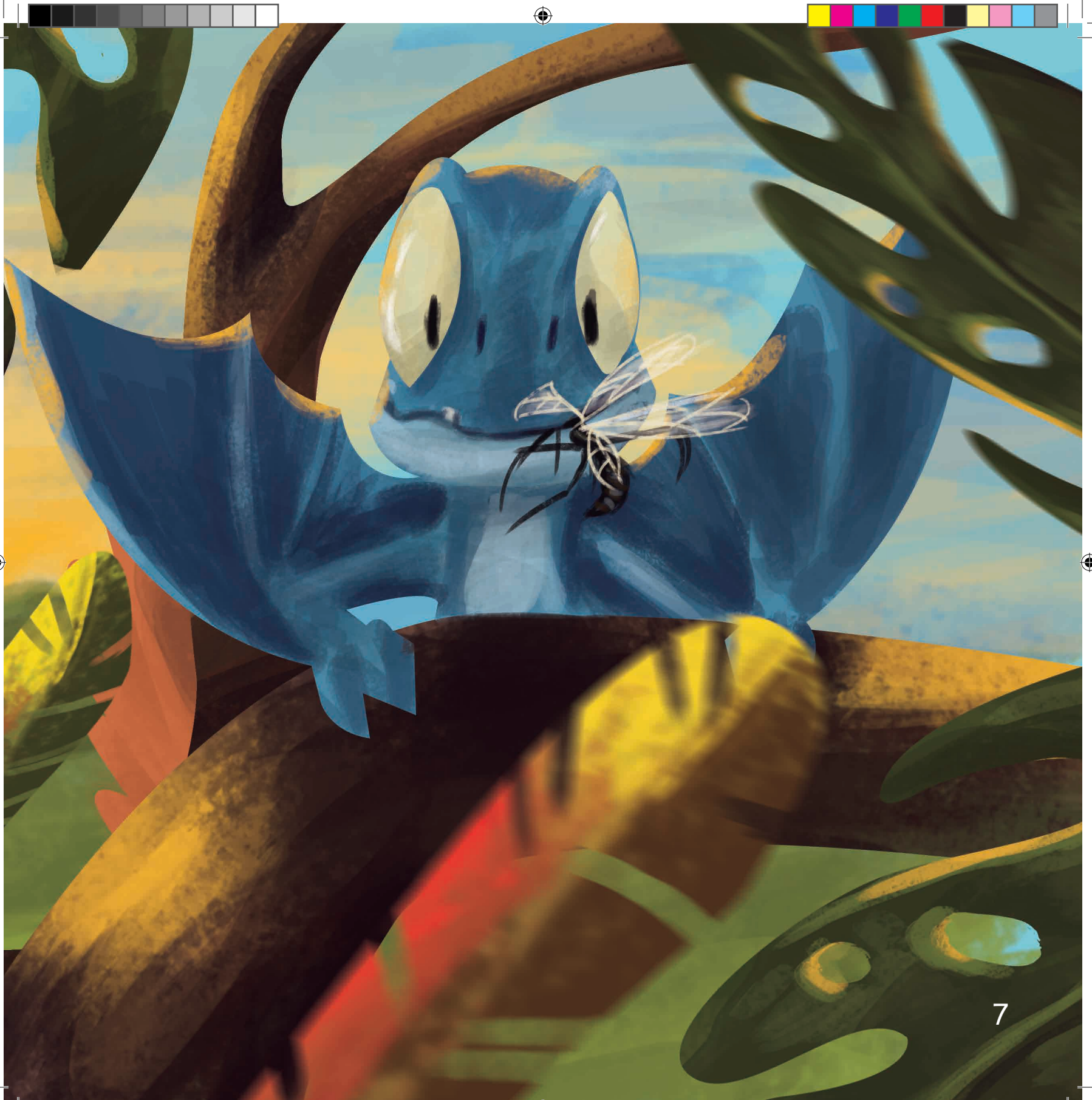
Lalahka mâ ba pain pali lakwisa
ba mita upla sut ba want sa.

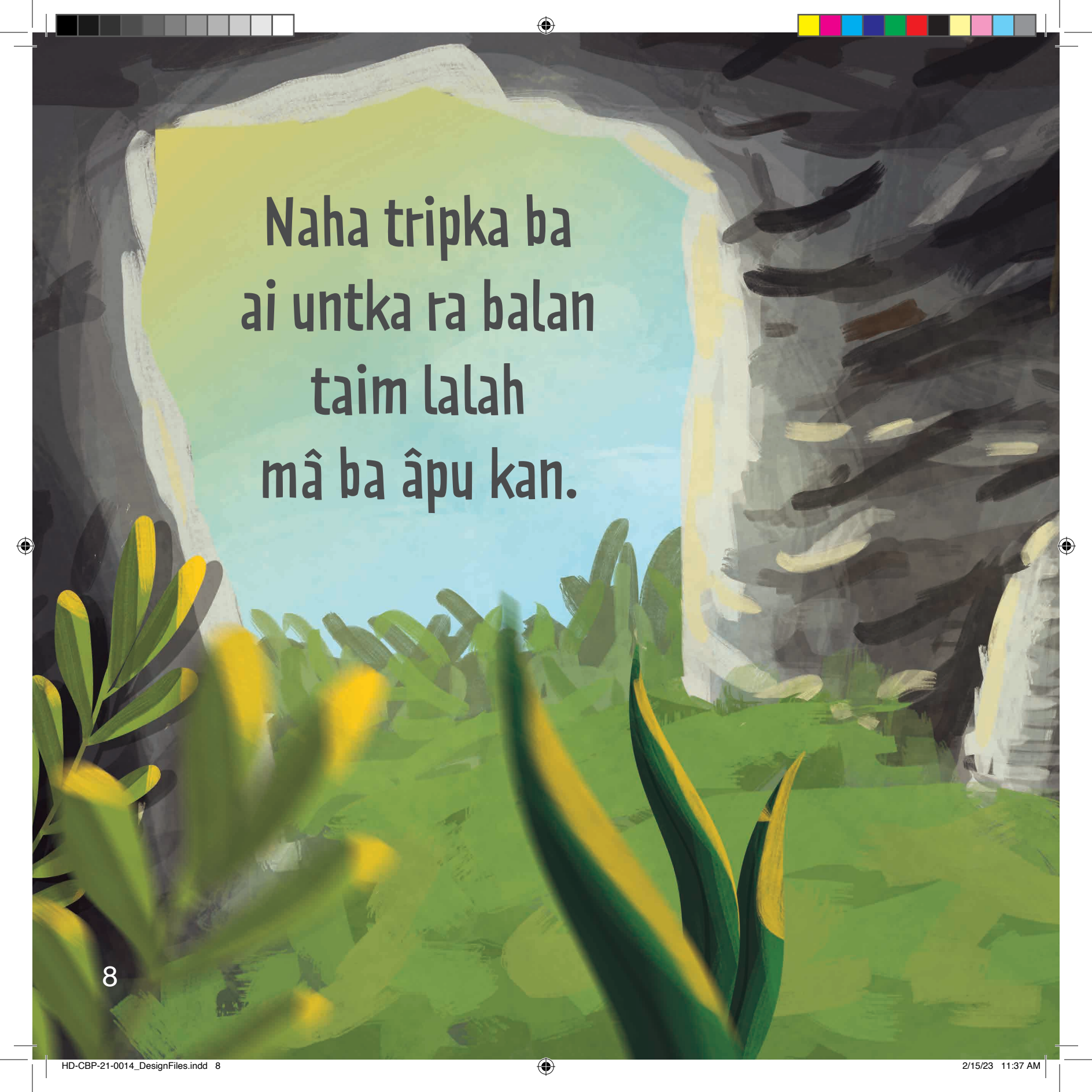




Pyu bani kau taki waras
taim yukukisi wisa.






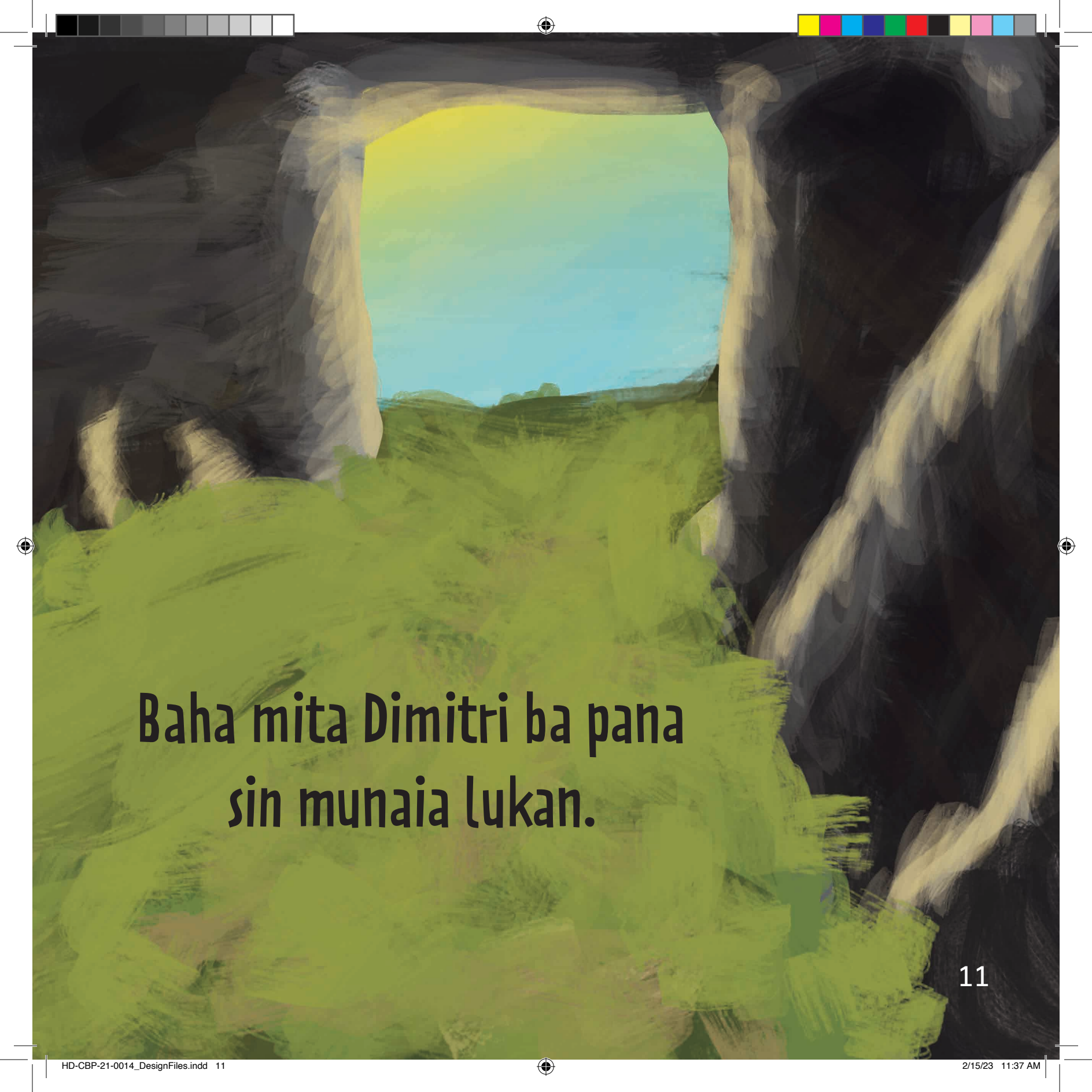


Naha tripka ba
ai untka ra balan
taim lalah
mâ ba âpu kan.





Imhpliki bauhwan kaia sa!

A painting of a cave opening. The cave interior is dark and shadowed, with rough, textured rock walls. A bright, glowing opening in the center of the cave reveals a vibrant landscape outside. The landscape is dominated by a bright yellow-green color, suggesting a field or a valley. The sky is a clear, light blue. The overall style is expressive and painterly, with visible brushstrokes and a rich, saturated color palette.

**Baha mita Dimitri ba pana
sin munaia lukan.**



12



An illustration of a child's face, showing the eye, nose, and open mouth. A large, dark shadow is cast over the right side of the face, suggesting a light source from the left. The background is a light, textured beige color.

Tuktan nani pata kata pin.



Tawan kiantilka nan kata
silkan.



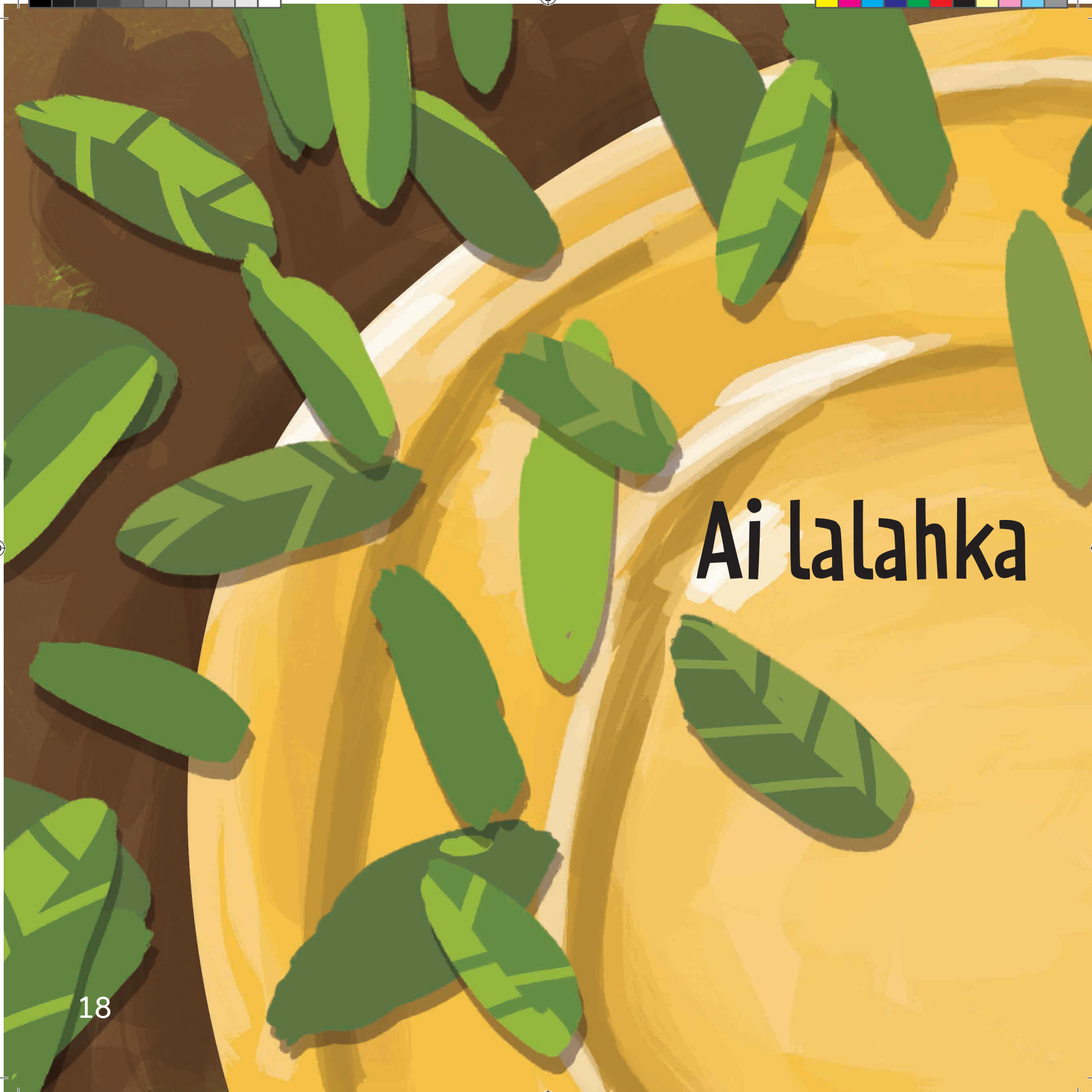
**Yuk nani manis daukan bara suapan
pali takaskan.**





**Mahka aiknikan taim diara kum
ambuk muni kan.**





Ai lalahka



mâ kata kan!


Ai lalahka mâ kata wal yapan kan.





Kuna pat tawan ra kupia
baikan kan...






Padin makaban
Dimitri bui.




Kuna ûba silpi ba mita sip upla
nani bui walras kan.




An illustration of an open cardboard box filled with various fireworks. On the left, a blue firework with a red conical tip is partially visible. In the center, a wooden stick lies across the box. To the right, there are several red cylindrical firework components, some with black wires attached. The box is set against a background of brown earth and a blue and white curved object, possibly a boat or a piece of fabric, is visible in the bottom right corner. The text is centered over the box in a white, sans-serif font.

Diara aihka pain kum
madikaia ridi takan,
ai lalahka kata ni payarikit
nani atkan.





Ai ritska kata ni
Dimitri kata kasbrika
ba kalat nani
baman bangki daukan.



Bara upla sut mita
ai pulanka nani ba padin
muhah.

