

LALU BA AYA WAUHWAN AKBISA



Eduardo Montalvo

Lilkika papaskra Luis Lee

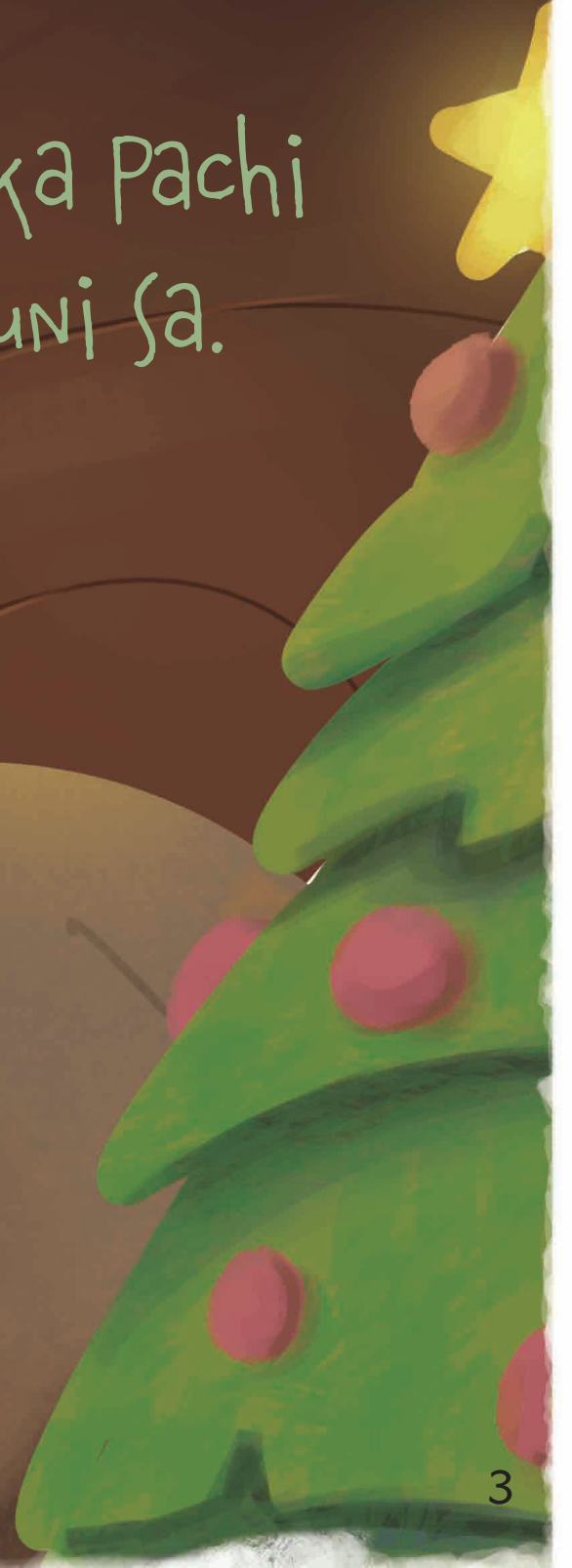
Bila wâla ra lakanka Scott Wood Ronas

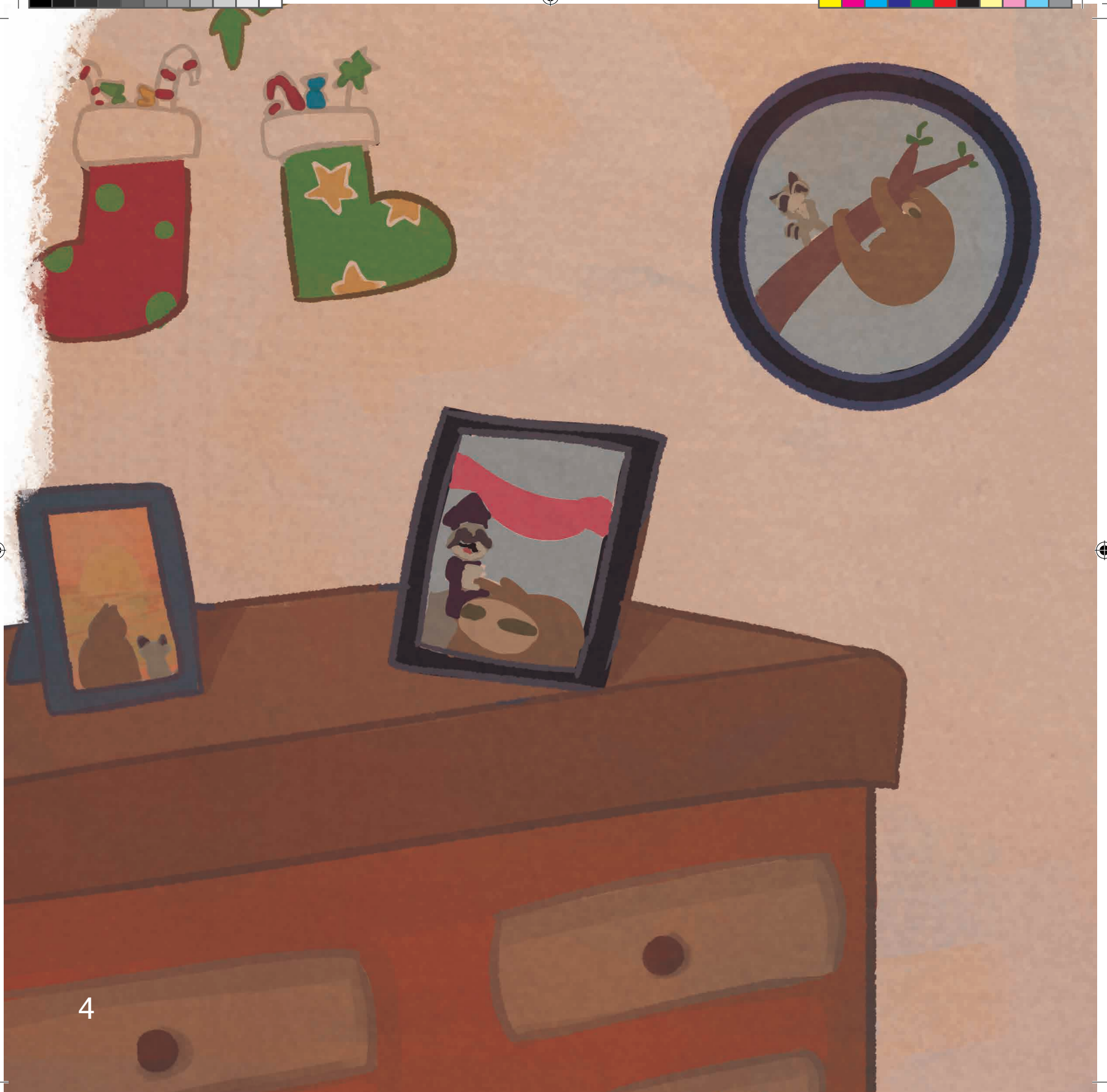


2



Lalu ai panika pachi
ra risip muni sa.





4

kris mis dukiara ridi taki
bauhwaia sa. ^{miadu}





wark takaiā asmala
nani wal.



6





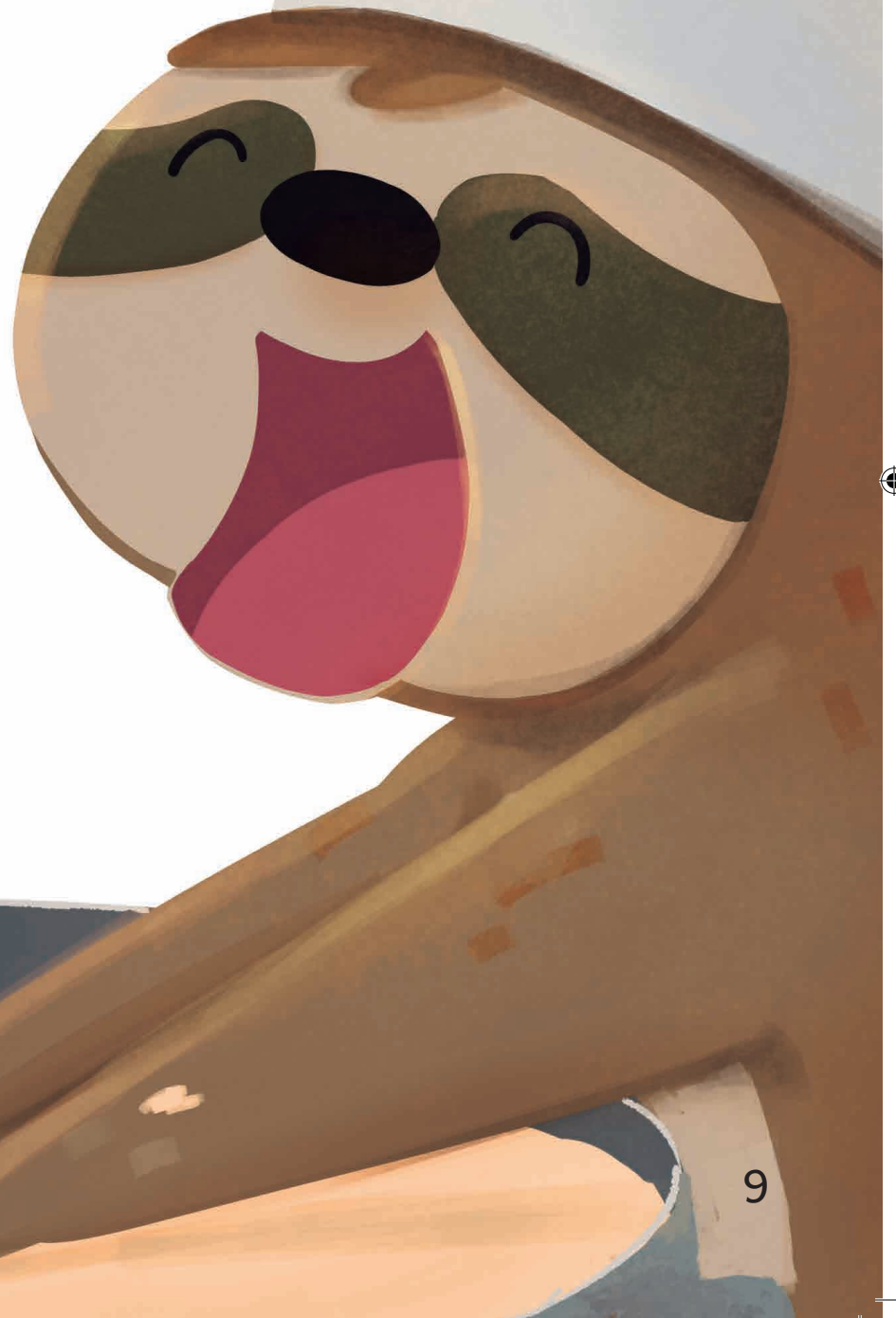
Lalu pain pali walisa iksplin
muni ba.



A cartoon illustration of a character with a grey face and dark hair, smiling broadly. The character is pouring a dark liquid from a grey bowl into a larger, light blue bowl. The larger bowl contains a brownish-orange mixture with various colorful ingredients like red and green pieces. The background is a soft, light grey gradient.

Likuat daukaia ba
tumati nani,
inian nani,
gialik nani,
kuma nani,
kulantru
nani
an
atsuti
sin.

Lalu aya wauhwan
akbisa, baha ba
uba suapni
ba mita yapan
dauki sa.





Lalu bus!







Lalu
pain pali walisa.



12



Lalu mahka likuat makaban
ba daukisa. uba isti tauki tawan
bla daukisa.





Lalu bus!



Plas wahya ra
Lalu bui



ayka wauhwan
ba blakan.

Swapni Lupia sa sîn
witin krikrika
baku.



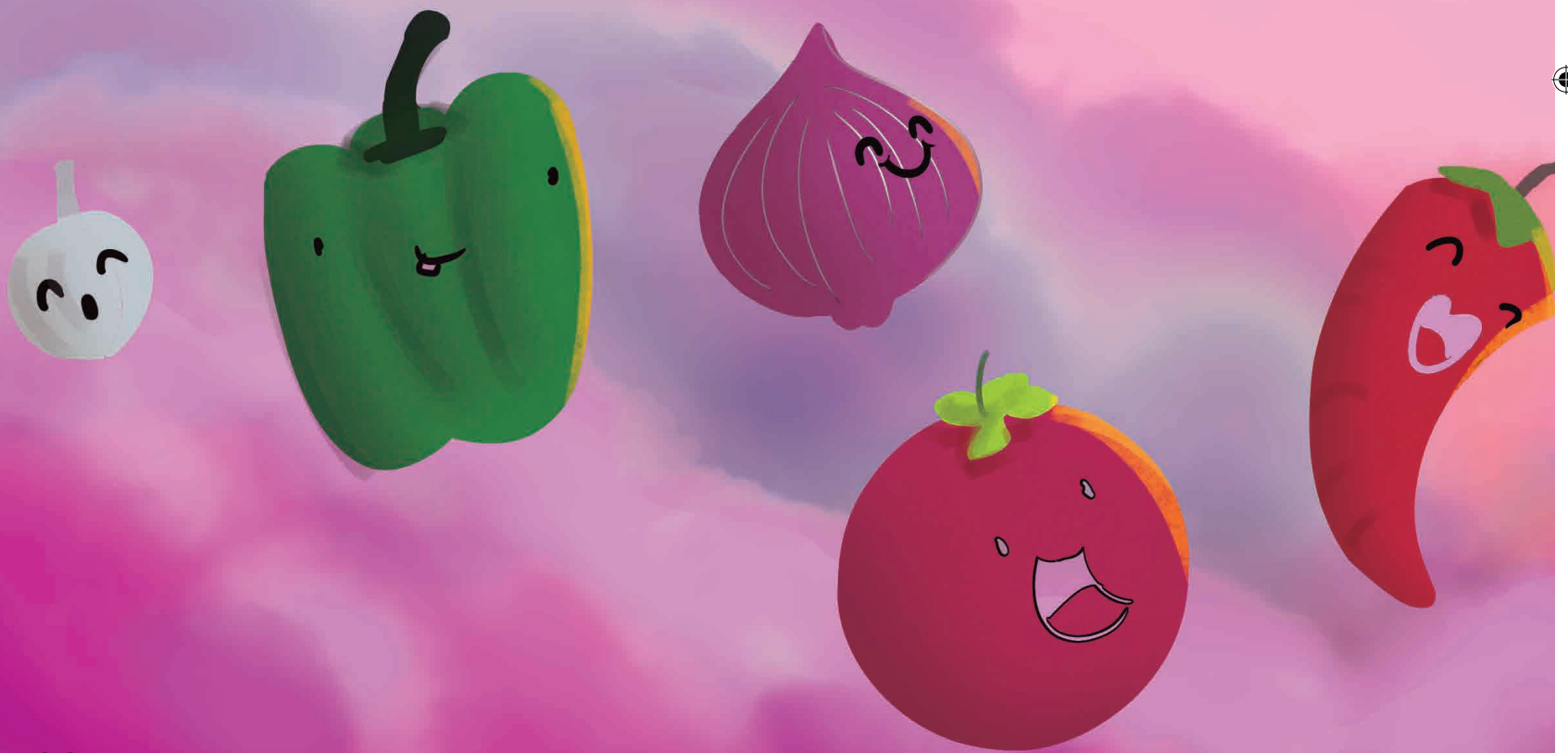
Tamal nani ba daukaia sa.
Lalu yapaia apia sa,



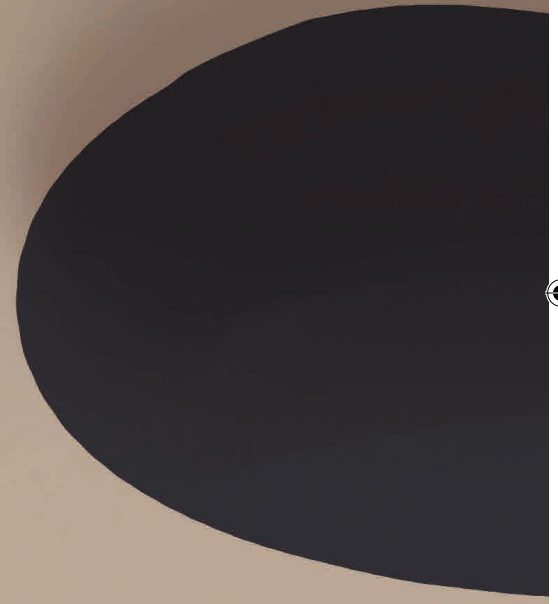
yapaia api asa, yapaia api asa,
yapaia apia...

... to, please.

Sa...







Amisa!





Lalu!





Tuhan... uria baman.



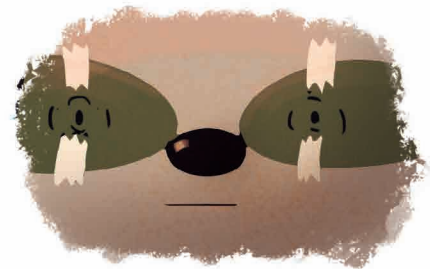



Pachi piesta ba
dukiara ridi takan
kaia sa.

Lalu puram
lubiara!




Lalu yapaia want sa, kuna tamal nani
lika bila kaiki sa.





Lalu aya wauhwan
ba akbisa.

Bratka
Laya pauni
ba likuat munuia.



Aya wauhwan
ba

blakisa.



Bara tamal nani ba
piakisa.








danh takan.





Krismis Lilia!



Lalu tamalka nani kau pain sa.
kan pachi mita smalkan ba mita.

