



Ana wihki slilma nani wal

Ana Patricia Ramírez

Lilkkika Papaskra:
Karen Medina Yamsan

Bila wâla ra lakanka:
Scott Wood Ronas



Lapta ba dimi wabia dukia
ra Ana ba lilia pali
bîla kaiki kan.



Planit nani lilikika baman
paskikan ani anira kabia.

Slilma painkira
baman tihmya
bani wih
kaiki kan.





Pulikan,
pulikan
an pulikan.






Bara trip kum kirhbaia
brik wan.



Hupitir t̄ara
ba kakaira
takan.



An Binus Lâlakra
ba sin. Mirkuri ba
lika uba lapta ba
mita laih wina lakula
dauki wauhwan.

Marti ra waia
Lika witin nani
kalat pauni ni
ai wina nani
ba dingkan.









Saturnu wihki Uranu aikuki
pulankea nani daukan.



Yukwi pulan

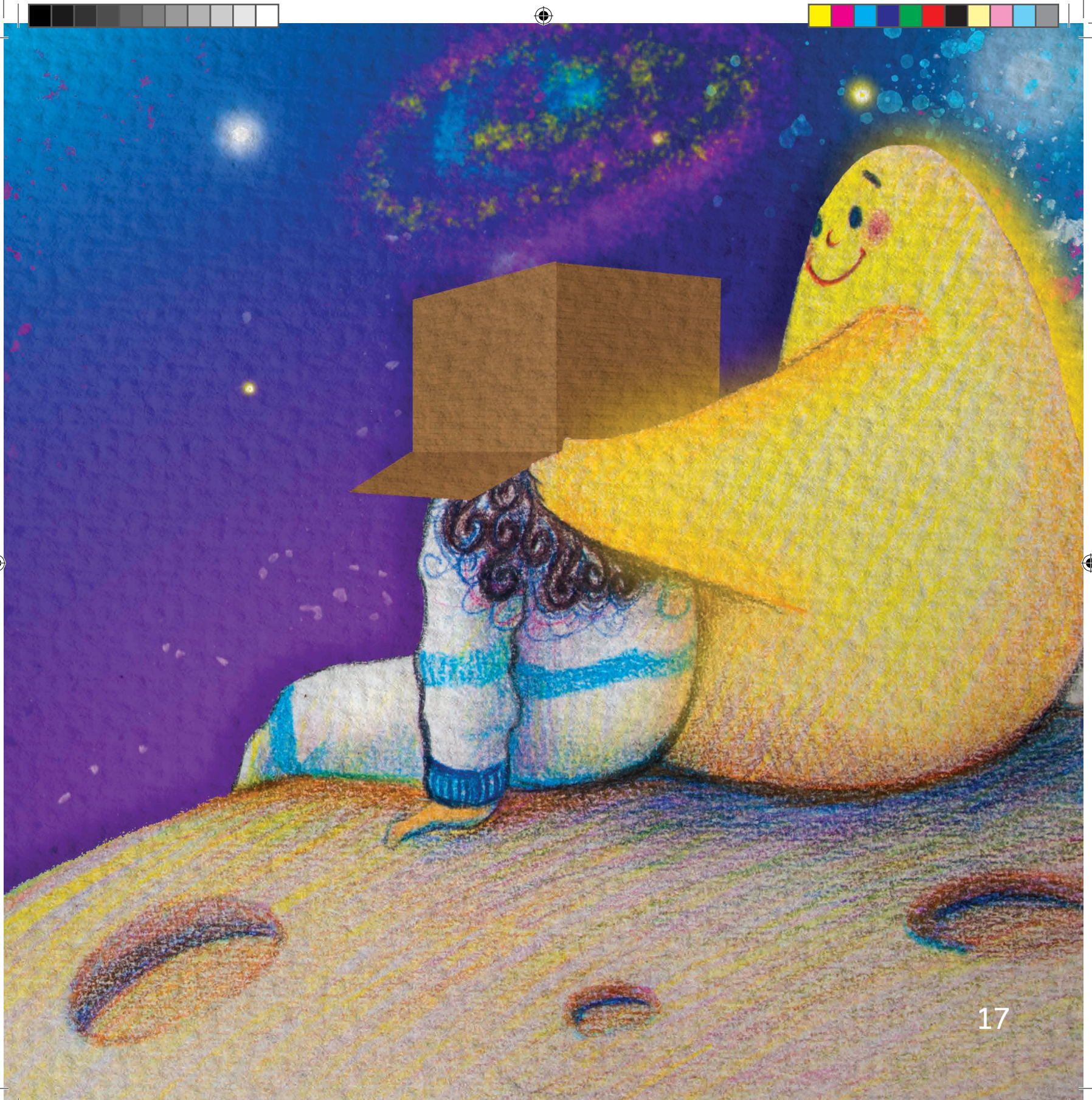





Plutun lupia wiikci
Niptunu wal sin.

Kuna kau painka ba lika
planit blû ba kaiki bauhwan.



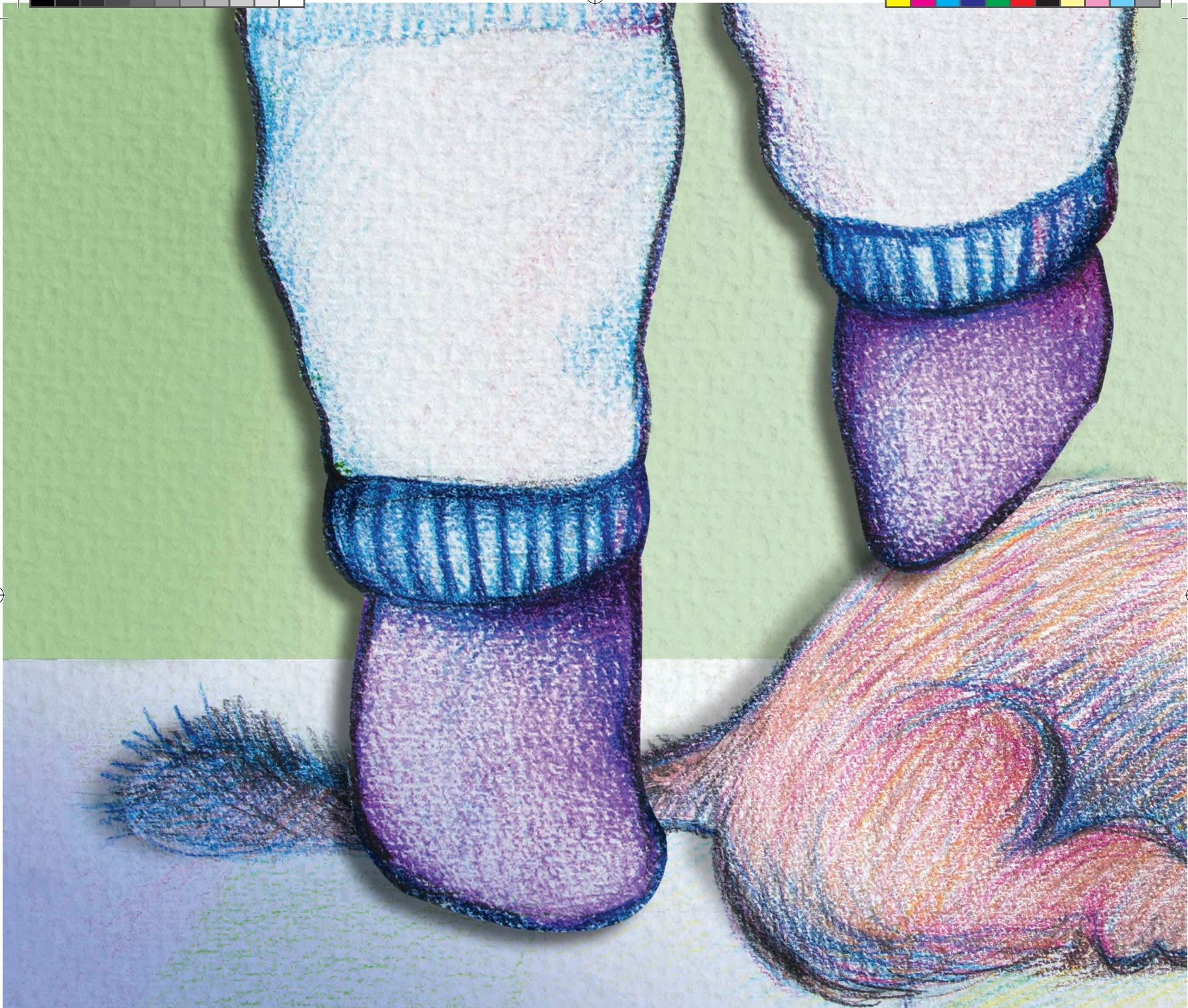




Kuna pat lîe takan ba
mita mahka kli tawi
balaia sa.

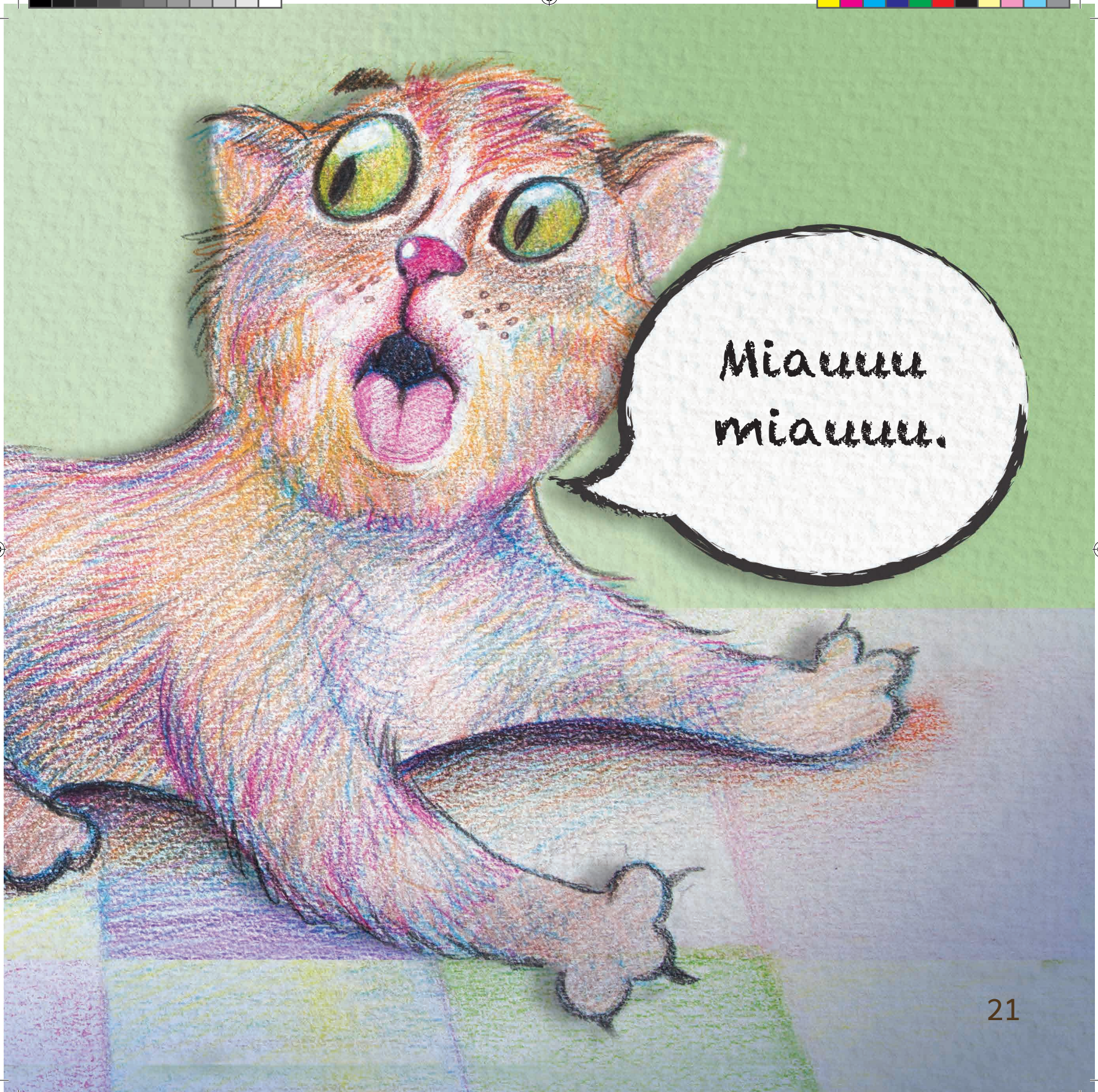


Stilmalpia
kaisaa!



Ai windarka bak diman bara






Miauuu
miauuu.







Ai krikrika ra isti
pali aikhikan.

A vibrant night sky with a rainbow and a shooting star. The background is a deep blue with numerous small, glowing blue and white specks, suggesting a starry night. A bright yellow shooting star with a long, curved tail of yellow and green light streaks across the sky from the upper right towards the center. Below the sky, a dark silhouette of a house with a chimney is visible. The text is written in a white, handwritten-style font on a dark background.

Ai kupia ra lika lukisa
timhya wala ra kirhbanka
wâla daukaia dukiara.